

About AES

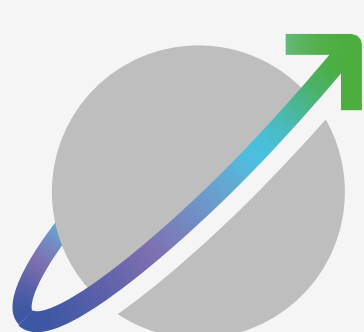
Founded in 1981 and headquartered in Arlington, VA, AES is a Fortune 500 global energy company accelerating the future of energy. AES is the **only** US-based global power company in the world.

In the US, AES **Clean Energy** operates over 400 wind, solar and battery storage projects across 21 states!

Our values:



Safety first



Highest standards



All together

Our clean energy footprint:

4.7 GW

Operating portfolio of clean energy projects across the US (solar, solar+storage, wind, wind+storage)

40+ GW

Portfolio of clean energy projects in development across the US

852 MW

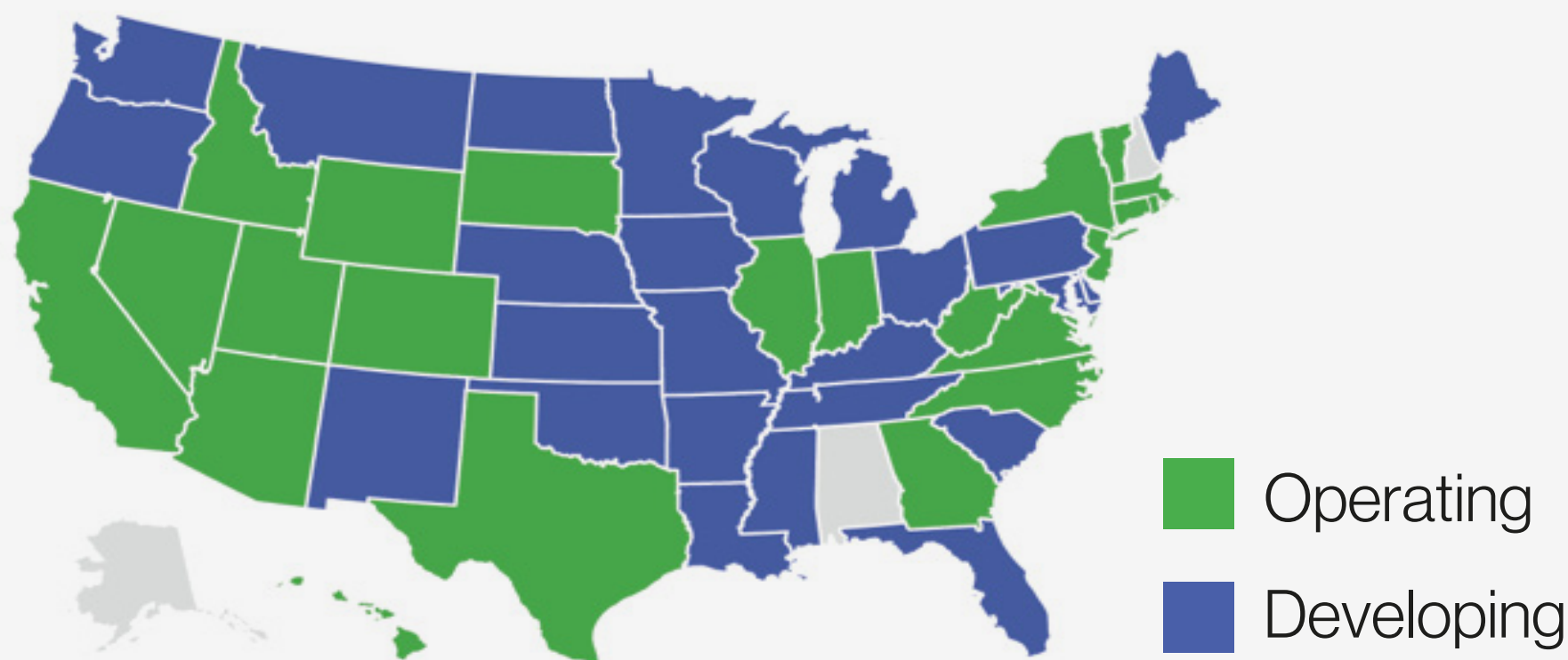
Operating portfolio in New York (solar, solar+storage, wind)

2+ GW

Development portfolio in New York (wind, solar, battery storage)

* 1 GW = 1,000 MW

In New York, AES is **energized** by a workforce of approximately **90 people**, with over **900 employees** working for AES Clean Energy across the country.



Accelerating the future of energy, **together**.



Clinton Repower Overview

AES plans to repower the existing Clinton wind park located in the Town of Clinton in Clinton County.

Repowering the project will entail removal and recycling of the existing blades on each wind turbine and replacing them with longer and more efficient blades. Drivetrains and hubs will also be replaced, generators will be refurbished, and foundations will be retrofitted.

The project layout will not change; existing wind turbine towers and foundations will remain in their current place, and no new turbines will be built anywhere on site.


Current Project

- Began operations in 2008
- 100.5 MW nameplate capacity
- [67] 1.5 MW turbines at 80-meter hub height (the top of the tower), with a 77-meter rotor diameter
- 126-foot blade length; 389-foot maximum tip height

Repowered Project

- [67] 1.62 MW turbines at 80-meter hub height with a mix of 97-meter and 91-meter rotor diameters
- Blade length increase of approximately 33 feet, increasing maximum tip height up to 422 feet
- Results in a 20%+ increase in energy production and extends the project life up to 30 years

Clinton Wind project layout



Town of Clinton

Map Description
Turbine Locations

Map Details

Clinton Turbines Survey


County Boundary

Town Boundary

0

1 Miles

N



Service Layer Credits: Sources: Esri, HERE, Garmin, USGS, Intermap, INCREMENT P, NRCan, Esri Japan, METI, Esri China (Hong Kong), Esri Korea, Esri (Thailand), NGCC, (c) OpenStreetMap contributors, and the GIS User Community

Repower Process

Phase 1

Site improvements

Site conditions will be upgraded to prepare for new blade delivery and crane work. This work will include:

- Minor tree clearing and grubbing (removal of stumps, shrubs & roots) along roads and around turbines
- Grading and smoothing of humps and dips in roads
- Foundation improvements up to a 50-foot radius from the center of the turbine

Phase 2

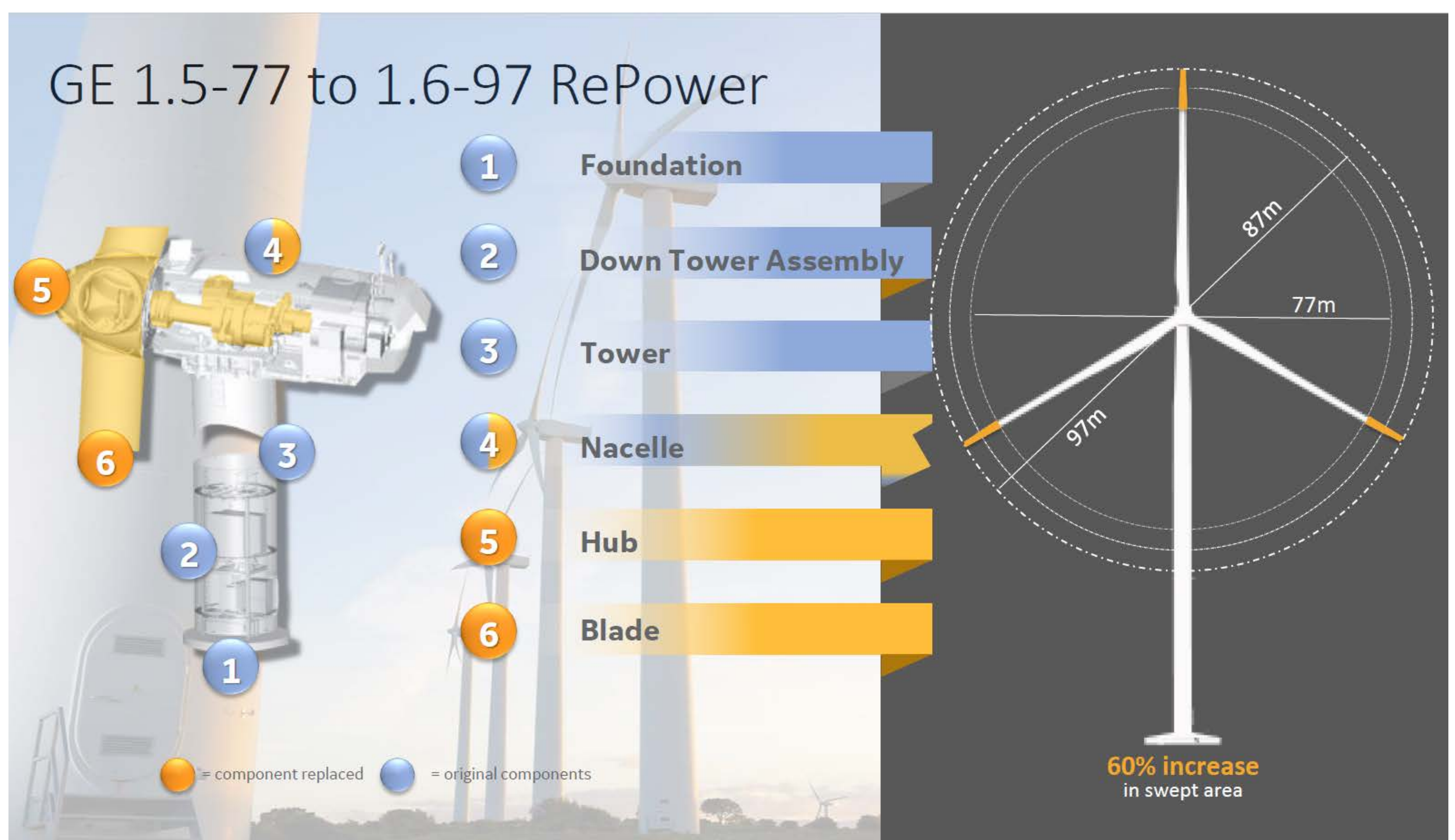
Deliveries

- A laydown yard will be used to store equipment

Phase 3

Installation

- Crane work will happen on a per-turbine basis, with up to three being repowered at one time



* Visual is not to scale

Repower Photos



New Rotor Installation



New Drivetrain Installation



Local Benefits

Benefits

- Economic Investment: In the 14 years Clinton & Ellenburg Wind have been operating, \$25 million has been added to the local economy through Host Community Agreement and PILOT payments
- Jobs: The 4 Northern NY Valcour wind parks employ 19 full-time wind technicians and leads, and 27 employees total, including 5 full-time techs at Clinton and 4 at Ellenburg Wind
- During the repowering process, there will be 100-150 construction jobs created



www.aes.com/clinton-wind
www.aes.com/ellenburg-wind



Community involvement

AES is a member of the North Country Chamber of Commerce, and the Northern NY team has invested in the local community through donations to the Northern Adirondack CSD and Clinton County Christmas Bureau.

Please reach out to us with your ideas, suggestions, questions or comments on how we can be a better neighbor and partner to the Clinton and Ellenburg communities!

We are committed to making positive local impacts that improve people's lives, especially in the areas of economic development, the environment, community health and resilience, and workforce development.

We want to hear from you!

Reach our NY Stakeholder Relations team at:

- 866-757-7697
- clintonwind@aes.com; ellenburgwind@aes.com
- 292 Madison Ave, 15th Floor, New York, NY 10017

Or contact our local Valcour office at:

- 518-497-0818
- 23 Lost Nation Road, Churubusco, NY 12923

Estimated Repowering Timeline

2022

Development Phase:

- Project analysis & planning
- Studies & engineering
- Permitting

2023

Implementation Phase:

- Site improvements
- Component delivery
- Installation (replacement of turbine blades, hubs and drivetrains)
- Resumption of operations

2024

2025