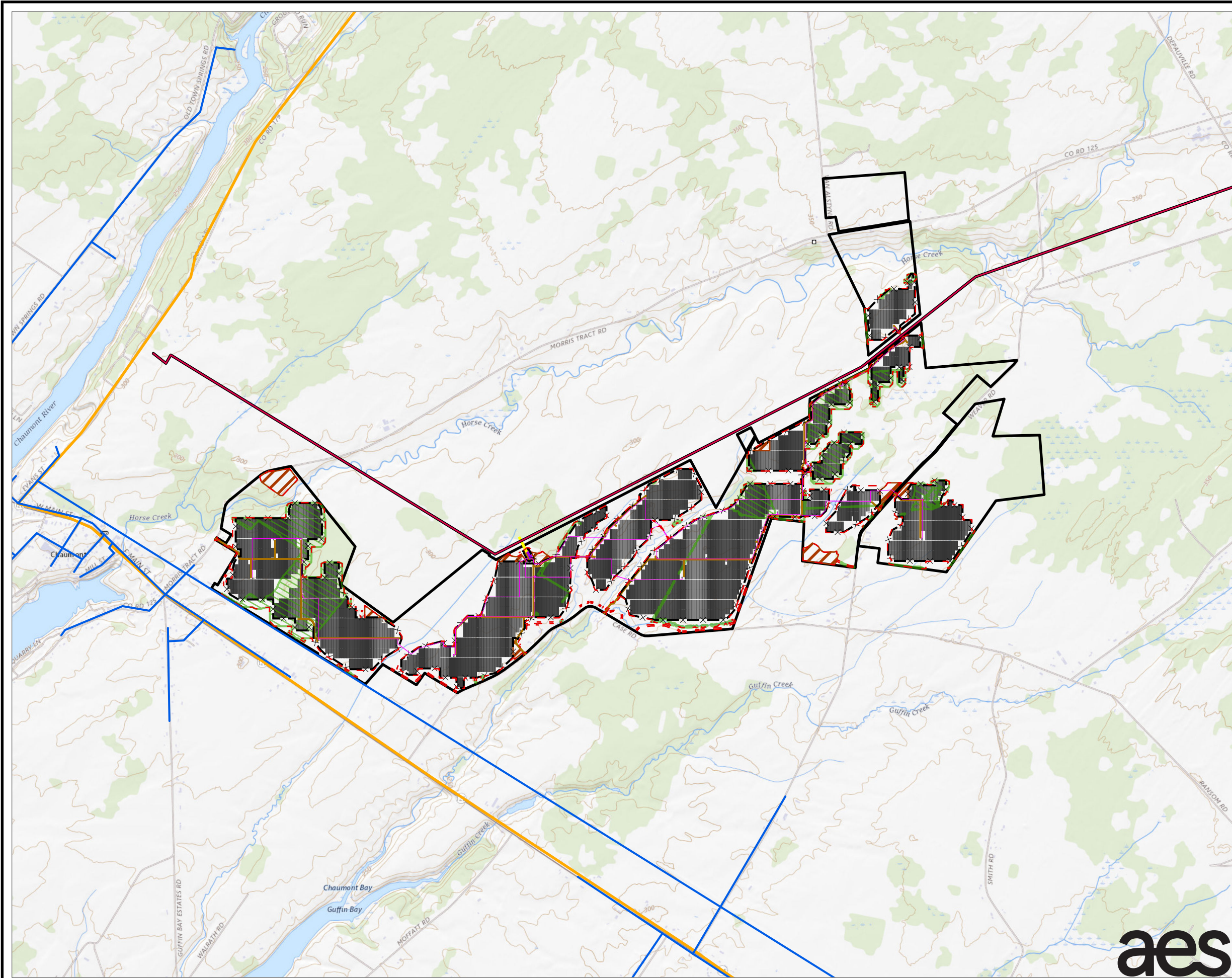


## Attachment D

### **Revised Figure 3-1. Topographic Maps of Facility Site**





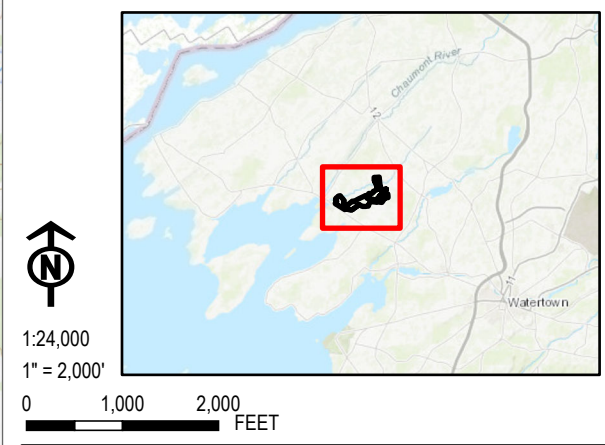
- LEGEND**
- EXISTING 115 KV TRANSMISSION LINE
  - APPROXIMATE FIBER LINE LOCATION (DANC)
  - APPROXIMATE WATER MAIN (DANC)
  - GAS PIPELINE (REXTAG)
  - PROPOSED UNDERGROUND COLLECTION LINE
  - PROPOSED OVERHEAD INTERCONNECT LINE
  - PROPOSED FENCE
  - PROPOSED ACCESS ROAD
  - PROPOSED COLLECTION SUBSTATION
  - PROPOSED LAYDOWN YARD
  - PROPOSED INVERTER
  - PROPOSED SOLAR PANEL ARRAY
  - LIMIT OF DISTURBANCE
  - LIMIT OF CLEARING
  - FACILITY SITE

**NOTES:**

1. NO STORM, SEWER, OR GAS INFRASTRUCTURE WAS IDENTIFIED BY DANC DATABASE.

2. THIS FIGURE IS DESIGNED TO BE VIEWED OR PRINTED IN COLOR AT 11X17.

BASE MAP: ESRI/USGS NATIONAL MAP "USGS TOPO" MAP SERVICE 2021.  
DATA SOURCES: AES, TRC, DANC, USGS, REXTAG.



PROJECT: <b>RIVERSIDE SOLAR LLC TOWNS OF LYME &amp; BROWNVILLE JEFFERSON COUNTY, NY</b>	
TITLE: <b>TOPOGRAPHIC MAPS OF FACILITY SITE</b>	
DRAWN BY: A. KAILAS	PROJ. NO.: 373222
CHECKED BY: A. HESSLER	<b>REVISED FIGURE 3-1</b>
APPROVED BY: S. KRANES	
DATE: JANUARY 2022	
215 GREENFIELD PKWY, STE 102 LIVERPOOL, NY 13088	

