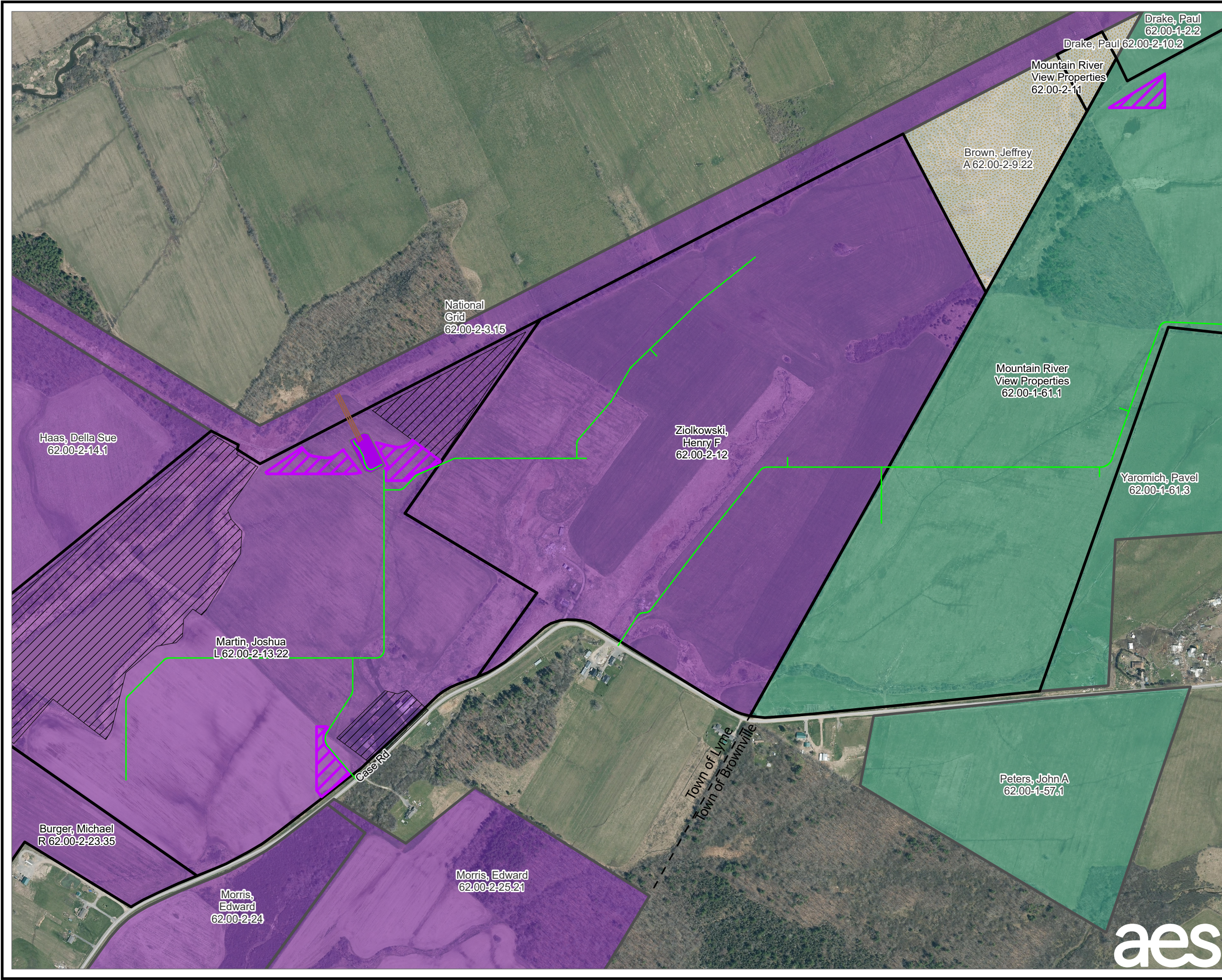


**LEGEND**  
 PROPOSED LAYDOWN YARD  
 PROPOSED ACCESS ROAD CENTERLINE  
 EXISTING 115 KV TRANSMISSION LINE  
 FACILITY SITE PARCEL  
 PARCELS ADJACENT TO FACILITY SITE  
 LANDOWNER-IMPOSED DEVELOPMENT RESTRICTION AREA  
 VILLAGE BOUNDARY  
 TOWN BOUNDARY  
**ZONING**  
 LYME - AR  
 CHAUMONT - B-1  
 CHAUMONT - BR

**NOTES:**  
1. THIS FIGURE IS DESIGNED TO BE VIEWED OR PRINTED IN COLOR AT 11X17.  
2. PARCEL BOUNDARIES SHOWN ON THIS FIGURE ARE DERIVED FROM PUBLICLY AVAILABLE PARCEL GIS DATA AND ARE NOT SURVEYED, THEREFORE THEY MAY NOT LINE UP WITH SURVEYED DATA AT LARGE SCALE DISPLAY (I.E. DEVELOPMENT RESTRICTION AREAS).  
  
BASE MAP: NYSGIS "LATEST ORTHOIMAGERY" 2021 ONLINE SERVICE LAYER.  
DATA SOURCES: AES,TRC, NYSGIS, JEFFERSON COUNTY RPTS.

1:7,200  
1" = 600'

PROJECT:		<b>RIVERSIDE SOLAR LLC TOWNS OF LYME &amp; BROWNVILLE JEFFERSON COUNTY, NY</b>	
TITLE:		<b>REAL PROPERTY MAP</b>	
DRAWN BY:	R. BARBER	PROJ. NO.:	373222
CHECKED BY:	A. KAILAS	<b>FIGURE 4-1 Sheet 1 of 4</b>	
APPROVED BY:	S. KRANES		
DATE:	SEPTEMBER 2021		
		215 GREENFIELD PKWY, STE 102 LIVERPOOL, NY 13088	



**LEGEND**

- PROPOSED LAYDOWN YARD
- PROPOSED COLLECTION SUBSTATION
- PROPOSED ACCESS ROAD CENTERLINE
- PROPOSED OVERHEAD INTERCONNECT LINE
- EXISTING 115 KV TRANSMISSION LINE
- FACILITY SITE PARCEL
- PARCELS ADJACENT TO FACILITY SITE
- LANDOWNER-IMPOSED DEVELOPMENT RESTRICTION AREA
- TOWN BOUNDARY

**ZONING**

- BROWNVILLE - AR2
- LYME - AR
- LYME - AR & WIND OVERLAY

**NOTES:**

- THIS FIGURE IS DESIGNED TO BE VIEWED OR PRINTED IN COLOR AT 11X17.
- PARCEL BOUNDARIES SHOWN ON THIS FIGURE ARE DERIVED FROM PUBLICLY AVAILABLE PARCEL GIS DATA AND ARE NOT SURVEYED, THEREFORE THEY MAY NOT LINE UP WITH SURVEYED DATA AT LARGE SCALE DISPLAY (I.E. DEVELOPMENT RESTRICTION AREAS).

BASE MAP: NYSGIS "LATEST ORTHOIMAGERY" 2021 ONLINE SERVICE LAYER.  
 DATA SOURCES: AES, TRC, NYSGIS, JEFFERSON COUNTY RPTS.

1:7,200  
1" = 600'

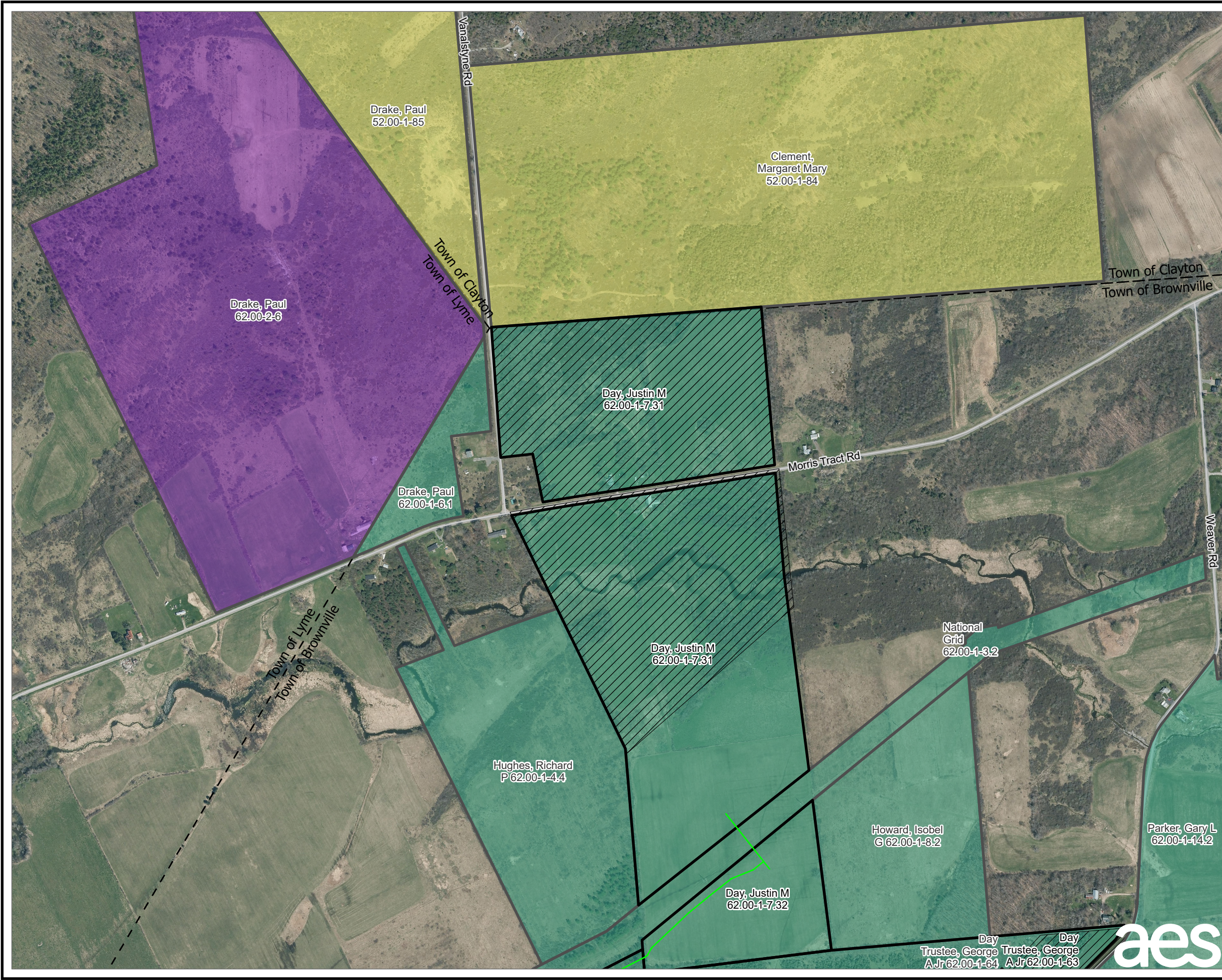
0 600 1,200 FEET

PROJECT:		<b>RIVERSIDE SOLAR LLC TOWNS OF LYME &amp; BROWNVILLE JEFFERSON COUNTY, NY</b>	
TITLE:		<b>REAL PROPERTY MAP</b>	
DRAWN BY:	R. BARBER	PROJ. NO.:	373222
CHECKED BY:	A. KAILAS	<b>FIGURE 4-1 Sheet 2 of 4</b>	
APPROVED BY:	S. KRANES		
DATE:	SEPTEMBER 2021	215 GREENFIELD PKWY, STE 102 LIVERPOOL, NY 13088	

**aes**

**TRC**





**LEGEND**

- PROPOSED ACCESS ROAD CENTERLINE
- EXISTING 115 KV TRANSMISSION LINE
- FACILITY SITE PARCEL
- PARCELS ADJACENT TO FACILITY SITE
- LANDOWNER-IMPOSED DEVELOPMENT RESTRICTION AREA
- TOWN BOUNDARY

**ZONING**

- BROWNVILLE - AR2
- LYME - AR
- CLAYTON - AR

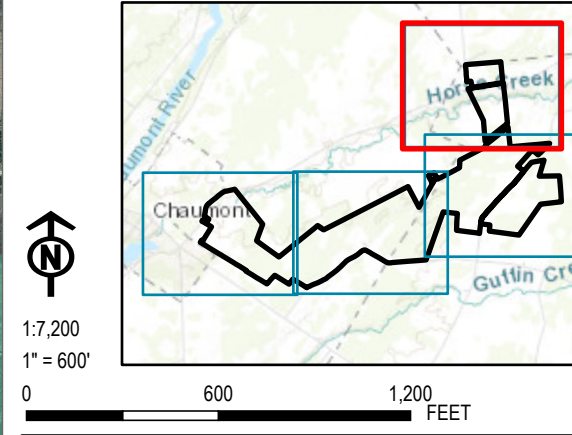
**NOTES:**

1. THIS FIGURE IS DESIGNED TO BE VIEWED OR PRINTED IN COLOR AT 11X17.

2. PARCEL BOUNDARIES SHOWN ON THIS FIGURE ARE DERIVED FROM PUBLICLY AVAILABLE PARCEL GIS DATA AND ARE NOT SURVEYED, THEREFORE THEY MAY NOT LINE UP WITH SURVEYED DATA AT LARGE SCALE DISPLAY (I.E. DEVELOPMENT RESTRICTION AREAS).

BASE MAP: NYSGIS "LATEST ORTHOIMAGERY" 2021 ONLINE SERVICE LAYER.

DATA SOURCES: AES,TRC, NYSGIS, JEFFERSON COUNTY RPTS.



PROJECT:		RIVERSIDE SOLAR LLC TOWNS OF LYME & BROWNVILLE JEFFERSON COUNTY, NY	
TITLE:		REAL PROPERTY MAP	
DRAWN BY:	R. BARBER	PROJ. NO.:	373222
CHECKED BY:	A. KAILAS	<b>FIGURE 4-1</b> Sheet 4 of 4	
APPROVED BY:	S. KRANES		
DATE:	SEPTEMBER 2021		
		215 GREENFIELD PKWY, STE 102 LIVERPOOL, NY 13088	

