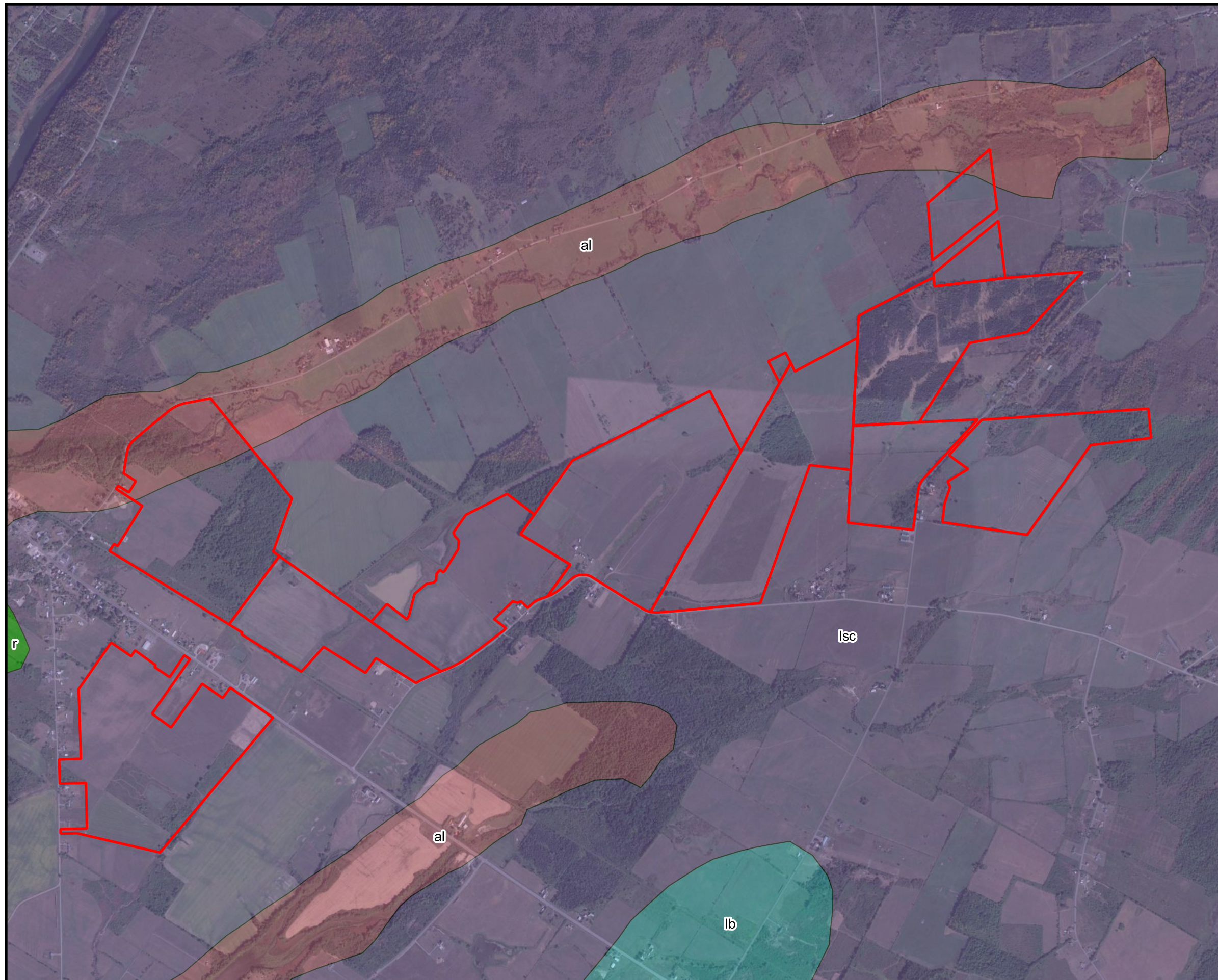


Client:



**FIGURE 10-2
SURFICIAL GEOLOGY MAP**

**AES
RIVERSIDE SOLAR PROJECT
CHAUMONT, NEW YORK**



Legend

Site Boundaries

Surficial Geology

al - Recent Alluvium

lb - Lacustrine Beach

isc - Lacustrine Silt and Clay

r - Bedrock

0 1,000 2,000 3,000 4,000 ft



**Reference Scale: 1:27,000
Absolute Scale: 1 inch = 2,250 feet
Scale at 11" x 17" AS SHOWN**

Prepared by: Kyle Hansen
Date: March 24, 2021
Drawing Number: SGM-1 Rev.0