



# Welcome to Limestone Solar community meeting

(formerly Bay Breeze Solar)

Contact us!

866-757-7697

[limestonesolar@aes.com](mailto:limestonesolar@aes.com)

<https://www.aes.com/project/limestone-solar>

Owned and developed by







# AES is building a **secure** and **sustainable** energy future

## About AES


Founded in 1981, The AES Corporation (AES) is a Fortune 500 global energy company accelerating the future of energy. Headquartered in Arlington, Virginia, AES is a leader in developing and delivering innovative energy solutions tailored to meet the needs of our customers and the communities we serve. We are committed to leading a responsible journey to a low-carbon energy future that prioritizes safety, affordability, reliability and sustainability.

## Our work

AES owns and operates nearly 600 utility-scale and community solar, wind, battery energy storage, and legacy energy infrastructure projects across 29 states and territories in the US. We deliver cost- competitive energy solutions to utilities, communities, corporations, and organizations to meet their energy and sustainability commitments both today and into the future. Our energy facilities create jobs, build community partnerships, and generate economic benefits for local communities and schools.


13.7 GW

in operation




6 GW

solar




2.3 GW

battery energy storage



2.4 GW

wind

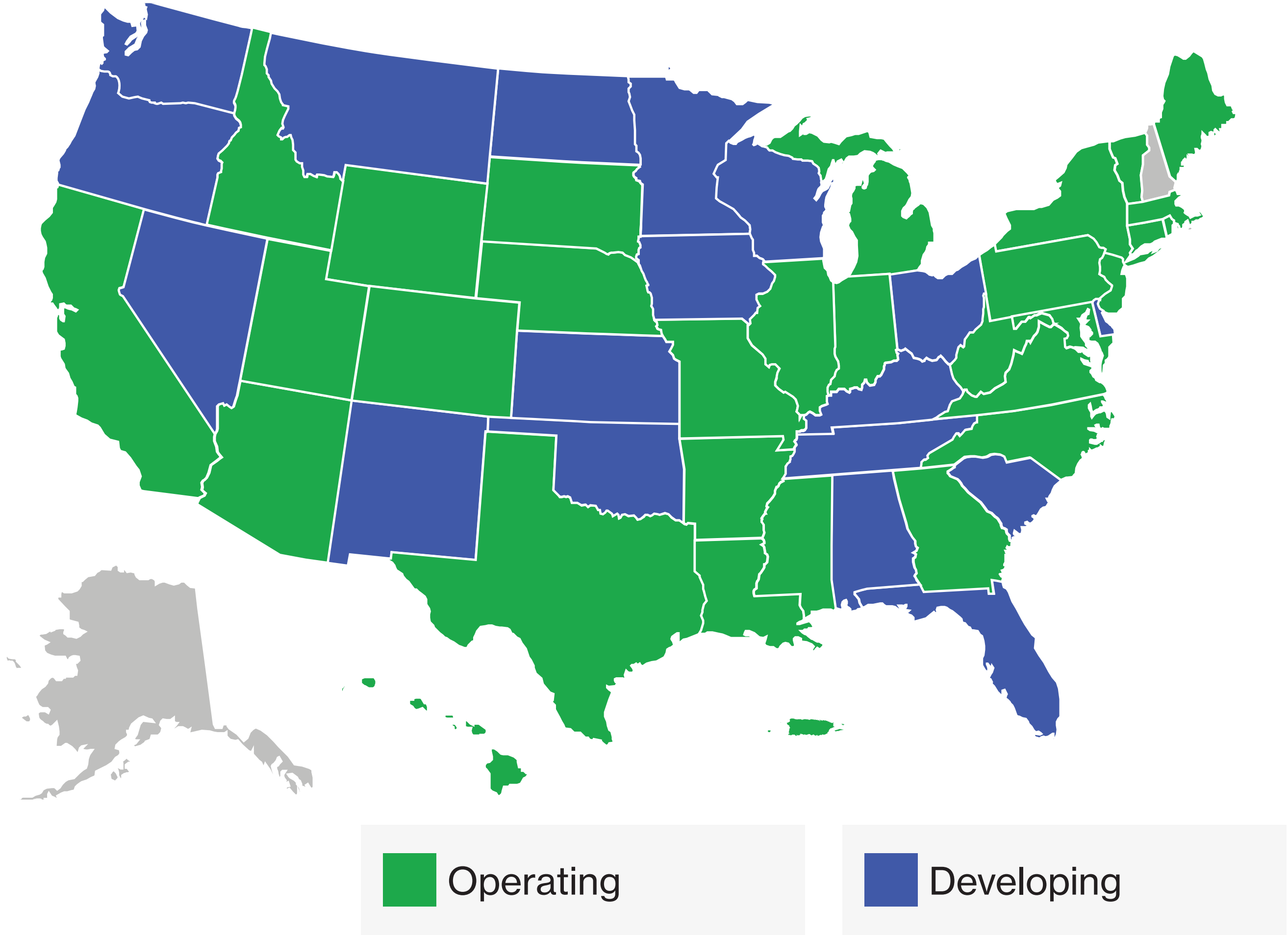


3.3 GW

energy infrastructure

53 GW

in development



Owned and developed by







# Innovation is in our DNA

At AES, our spirit of innovation drives us to accelerate the future of energy. We were the first to offer hourly matched 24/7 carbon-free energy, delivering clean energy to our customers to power their operations when the sun isn't shing or the wind isn't blowing. From generation forecasting to advanced robotics for solar panel installation, we're applying AI throughout our business and project life cycle to achieve unprecedented improvements in efficiency, productivity and safety.

We're also a pioneer and leader in battery energy storage, advancing both the technology and the market to support a reliable power grid and maintain energy security. Through our own development and with Fluence, our joint venture with Siemens, we continue to be named the top provider for energy storage products, services and optimization software.



# Improving lives

AES is committed to being a good neighbor, employing sustainable clean energy development practices that improve lives and deliver positive impacts to the communities where we operate. In 2024, AES donated more than \$3.8 million to more than 140 non-profit organizations in the communities that host our projects. Our people work closely with all stakeholders to ensure the environmental and economic benefits of our energy projects accrue equitably, while respecting the values of local communities and cultures. Together, we create long-term value and impact through social impact partnerships and programs aligned with the United Nations' Sustainable Development Goals and our four social impact pillars:

- Access to energy
- Inclusive economic growth
- Environment
- Community resilience and relief services

# Our commitment to safety

At AES, safety is our top priority. We put safety first every minute of every day for our workers, our partners and contractors, and the people in the communities we serve. This commitment continues throughout our project lifecycle working closely with local safety officials, fire departments and emergency responders as we design and implement comprehensive safety measures during the development, construction, and operations of our facilities.

# We are proud to be recognized as

## Bloomberg

NEW ENERGY FINANCE  
#1 seller of clean energy to corporations over the last four years

## Forbes

Forbes' America's Most Trusted Companies, 2025  
Forbes' Top 50 Green Growth Companies, 2021

## Newsweek

Most Responsible Companies, 2021, 2022, & 2025  
America's Greatest Workplaces for Veterans, 2024 & 2025  
Top 25 Most Trusted Energy / Utility Companies, 2022

## FAST COMPANY

Fast Company's 100 Best Workplaces for Innovators, 2020, 2022, & 2024  
Fast Company's, World's Most Innovative Companies List, 2022  
Fast Company's, Best Workplaces for Early Career Innovators, 2022

## THE WALL STREET JOURNAL.

Wall Street Journal's Best Managed Companies, 2020, 2021, 2022 & 2024

## FORTUNE

Fortune 500 (#319), 2024  
Fortune's World's Most Admired Companies, 2024

## CIO 100

CIO Award for IT Leadership & Innovation, 2024, 2025

## ETHISPHERE

GOOD. SMART. BUSINESS. PROFIT.  
Ethisphere World's Most Ethical Companies, 12-years running

Owned and developed by





# AES' social impact program

## Program mission

Our social impact program partners with communities to strengthen positive impact through socioeconomic and environmental partnerships that improve lives today and in the future.

## Partnering with communities

Investments in the local community have been made via social impact to support organizations including the Lyme Free Library, United Way of Northern NY, Three Mile Bay Fire Department, IBEW Local 910, and the Jeff-Lewis BOCES program.

AES has been a proud sponsor of local and regional events including

- Career Jam 2025, 2024, and 2023
- Lyme Ice Fishing Derby 2025, 2024, 2023
- Lyme Community Foundation Christmas Gala 2024
- 2025 Black River Watershed Conference

We are committed to community, accessibility and communication, and view community engagement as a two-way street. Please reach out with your ideas, suggestions, questions or comments on how we can be a better neighbor and partner to Limestone Solar communities!

## Focus pillars

Our 4 focus pillars are our initial framework for providing donations to community organizations and developing partnerships to positively impact our host communities.

- Partnering for access to safe, efficient, and affordable energy and basic services.
- Partnering for inclusive economic growth and education.
- Partnering for the environment.
- Partnering for community resilience.



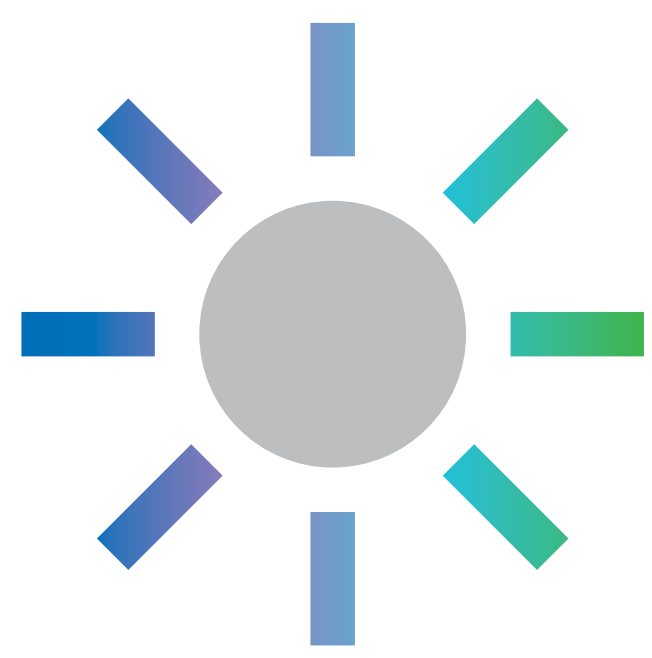
AES Senior Analyst Matthew Gibbs engages with attendees at the 2025 Black River Watershed Conference.



Owned and developed by







# Solar energy benefits communities

## Best practices in responsible and sustainable development

As AES, safety is our highest priority, and we have had a focus on improving lives for more than 40 years. As a leading innovator in energy solutions, sustainability is core to both our strategy and our culture. We are committed to responsible land use and incorporating sustainable best practices into the entire project lifecycle, contributing to building a domestic energy independence.

## Innovations in sustainable development



### Thoughtful design

- Vegetative buffers, including pollinator mixes and native grasses
- Robust, nutrient-rich ground cover
- Agrivoltaics, pollinator habitats and other dual uses
- Comprehensive environmental studies



### Low impact construction

- Minimal grading
- Erosion and sediment control measures
- Local workforce opportunities



### Maintenance innovations

- Vegetation management with grazing sheep
- Spot weed control
- Care for vegetative buffers and native species
- Long-term local workforce opportunities



### Responsible decommissioning

- Decommissioning plan
- Supply chain sustainability
- Collaboration with companies like SOLARCYCLE to assess recycling opportunities for end-of-life solar materials

Owned and developed by





# Limestone Solar overview

## Nameplate capacity

150 MW Solar



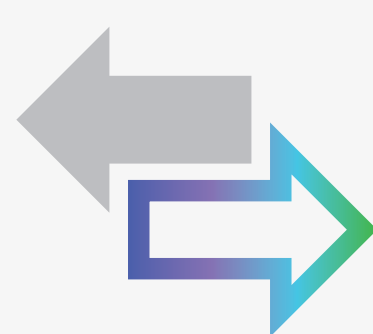
## Location

Town of Lyme  
Jefferson County  
New York



## Point of interconnection

Existing 115kV  
Lyme Substation



## Environmental benefits

Enough electricity to power over  
20,000 homes annually



## Project footprint

Approx. ~1,000 acres



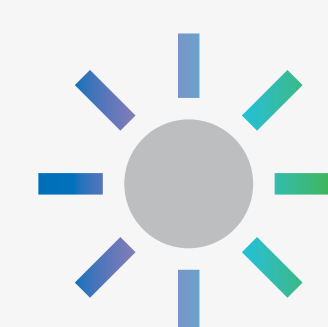
## Economic benefits

Limestone Solar will make a positive economic impact on local taxpayers by adding tax dollars to the local economy with relatively little increase in local services. Limestone Solar will create hundreds of high-paying construction jobs and provide local operations jobs in New York State.



## Expected commercial operation date (COD):

2029

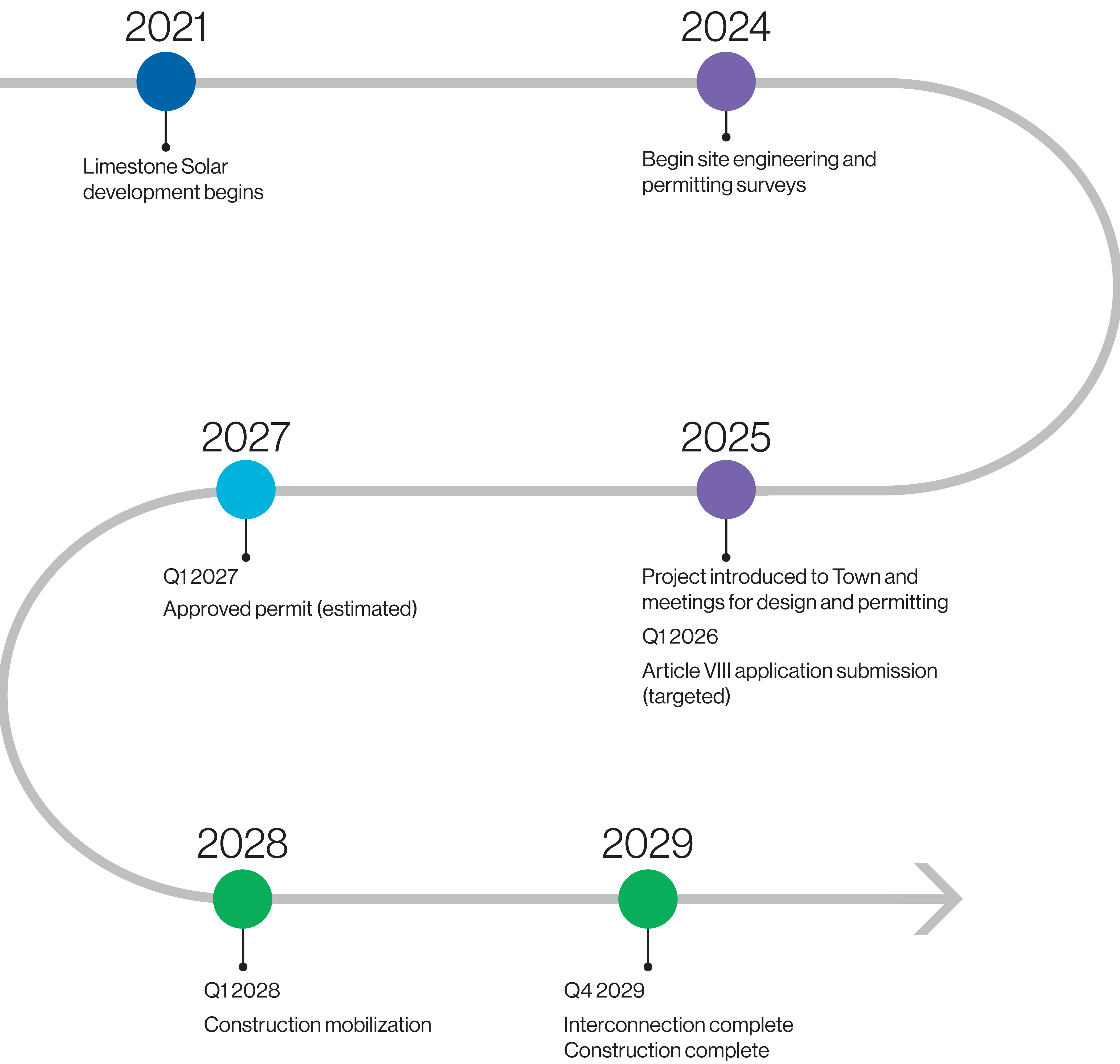


Owned and developed by





# Proposed project timeline

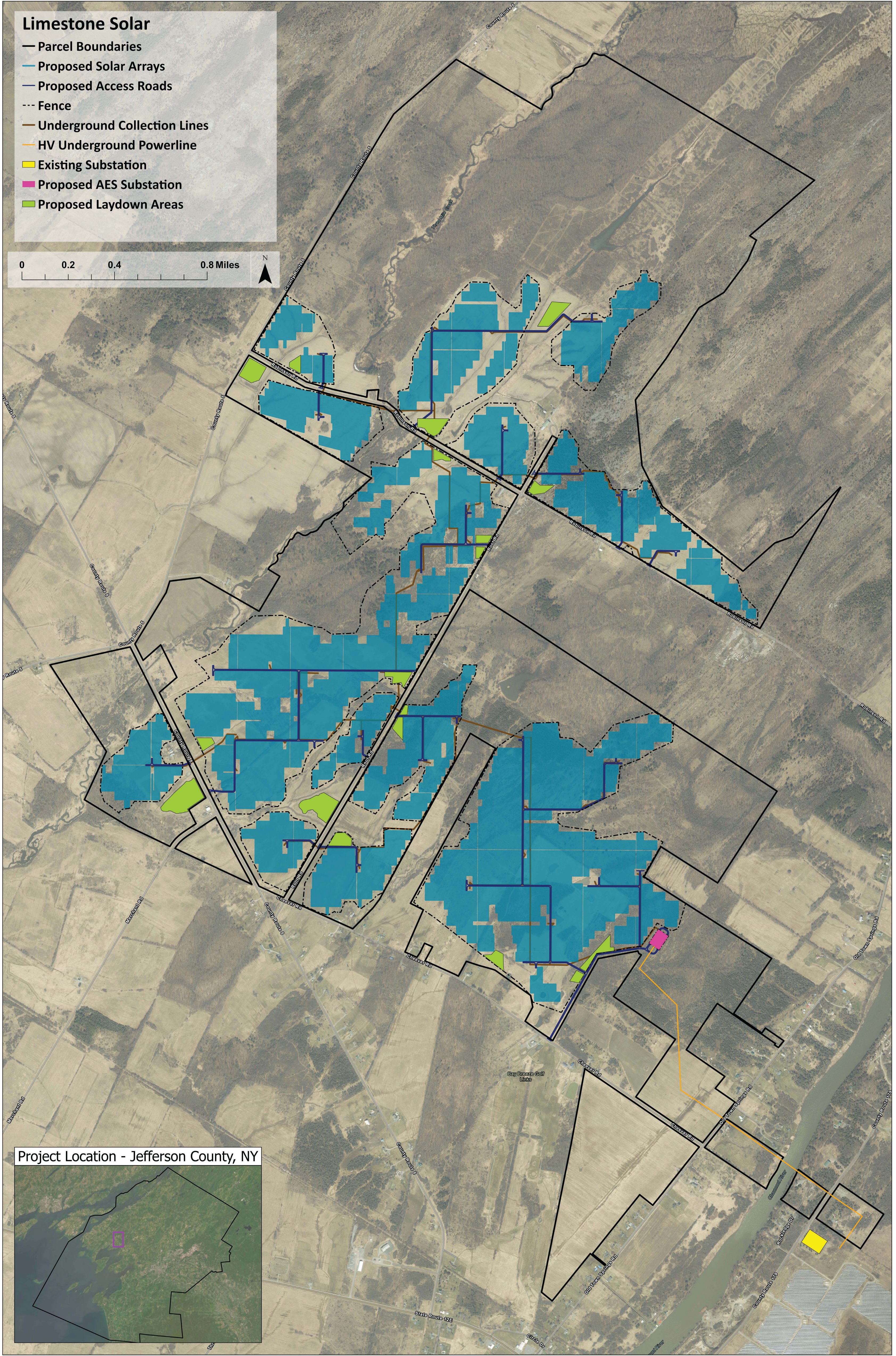


Owned and developed by





# Limestone Solar project layout



Owned and developed by





# Project decommissioning

Facility decommissioning will be initiated when the facility reaches the end of its operational life typically 25-35 years. Limestone Solar (the Applicant) will be responsible for the decommissioning of the Facility.

The cost of decommissioning will be estimated by a third party engineer and the estimated net cost amount, plus 15%, is placed as security which towns have access to in the event it is needed. The town will be consulted on the cost estimate for decommissioning.

The Applicant will provide notice by mail to landowners and the Town of Lyme prior to commencing decommissioning work.

As part of the decommissioning process, the facility site will be restored to pre-construction conditions, including disassembly and removal of above ground structures, removal of subsurface structures to allow for continued agricultural use of the site, and reestablishing vegetation.

The Applicant shall consult with National Grid to complete the de-energization efforts and ensure there is no disruption to the electric grid.



Owned and developed by



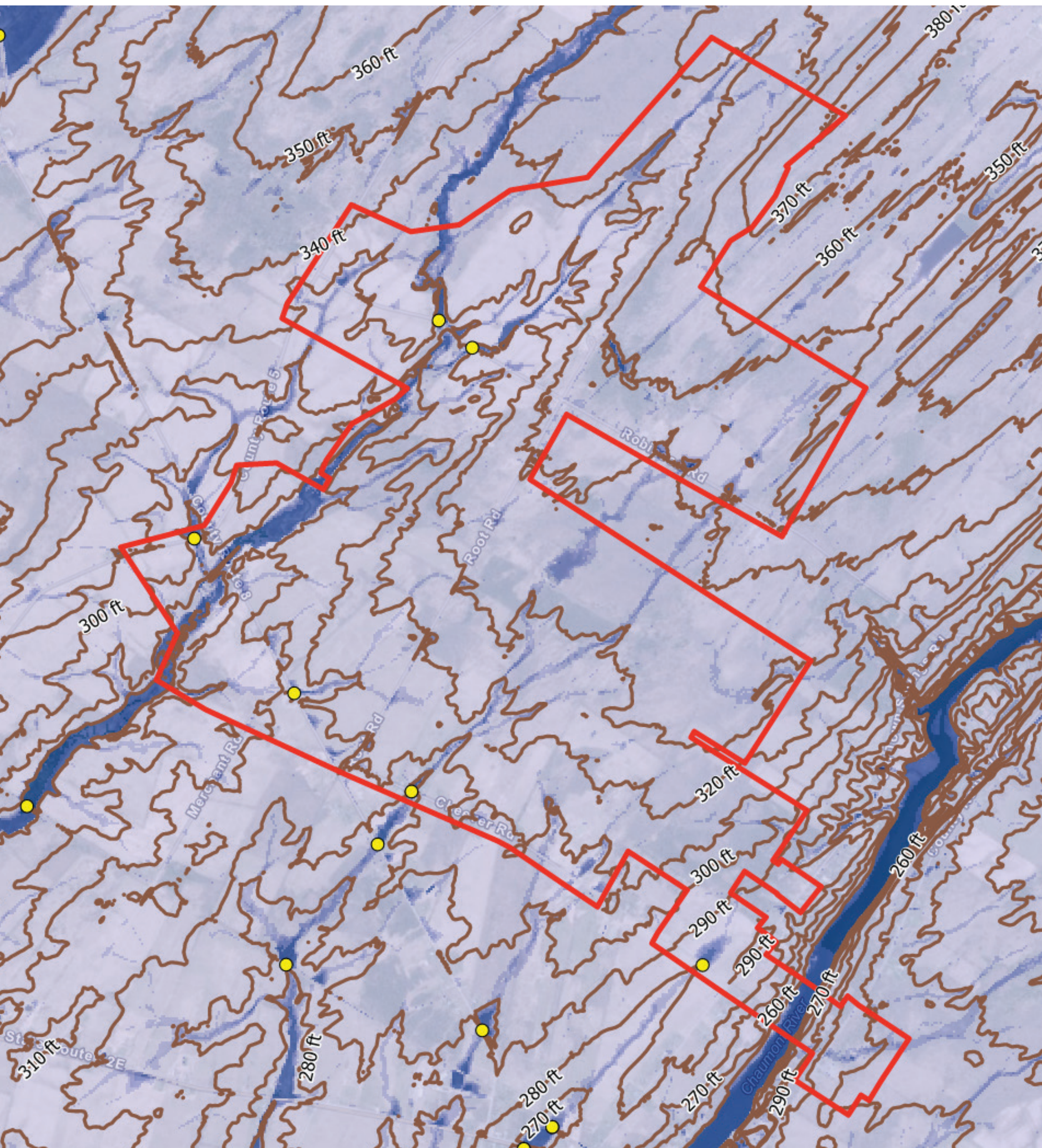


# Engineering studies



## Geotechnical investigation

A desktop geotechnical report was completed on April 2, 2024, followed by a comprehensive karst site investigation conducted in July 2025 to develop a detailed understanding of the soil and subsurface conditions. A field geotechnical study will be completed in fall 2025.



## Civil engineering layout

Limestone Solar has been optimized to maintain capacity while minimizing impacts to threatened and endangered (T&E) species and high-priority wetlands.

## Hydrology and hydrologic analysis

A thorough hydrologic analysis was completed in June 2025 to understand how water moves through the area, including where floodplains exist and where they may develop in the future.

Owned and developed by





# Article VIII siting application exhibits

1. General requirements
2. Overview and public involvement
3. Location of facilities and surrounding land use
4. Real property
5. Design drawings
6. Public health, safety and security
7. Noise and vibration
8. Visual impacts
9. Cultural resources
10. Geology, seismology and soils
11. Terrestrial ecology
12. NYS threatened or endangered species
13. Water resources and aquatic ecology
14. Wetlands
15. Agricultural resources
16. Effect on transportation
17. Consistency with energy planning objectives
18. Socioeconomic effects
19. Environmental justice
20. Effect on communications
21. Electric system effects and interconnection
22. Electric and magnetic fields
23. Site restoration and decommissioning
24. Local laws and ordinances
25. Other permits and approvals

Owned and developed by





# Environmental studies



## Wetlands and streams

Biologists have conducted surveys on-site over several years to document the extents and characteristics of wetlands and streams. The Project will avoid and minimize impacts to wetlands and streams to the maximum extent practicable.

AES is coordinating with ORES (Office of Renewable Energy Siting and Electric Transmission) regarding jurisdiction, permitting, and potential mitigation.



## Listed species and habitat

Avian surveys were conducted on-site for grassland breeding birds and wintering raptors. A Wildlife Site Characterization Report was prepared.

AES will continue to coordinate with ORES and NYSDEC regarding habitat occupied by listed species. The Project is being designed to avoid and minimize impacts; if unavoidable, mitigation in the form of a Net Conservation Benefit Plan will be required.



## Cultural resources

AES has conducted thorough evaluations (both desktop and in the field) to evaluate the extents of culturally significant resources on-site and will implement avoidance measures and conduct additional studies as design advances when the facility design is finalized, AES will conduct additional study to confirm that facility site will protect historic and archaeological resources.

AES will coordinate with the Oneida Nation, Onondaga Nation, Seneca-Cayuga Nation, the NYS Historic Preservation Office (SHPO), and the Tribal Historic Preservation Office (THPO).

Owned and developed by





# Article VIII permitting highlights

Prior to submitting an Article VIII permit application, Applicants are required to consult with the local agencies and stakeholders of the community(ies) in which the proposed project will be located.

ORES requires that state agencies (e.g. NYSDEC) are consulted on wetland and stream delineations, threatened and endangered species, and archaeological and cultural resources, as necessary.

From the date of its receipt of a permit application, Office of Renewable Energy Siting and Electric Transmission (ORES) has 60 days to make a completeness determination. After a completeness determination, draft permit conditions will be issued by ORES for public comment. Within the comment period, the host municipalities must submit a statement indicating whether the proposed renewable energy facility complies with applicable local laws. ORES must issue a final decision on the siting permit within one year of the date on which the application is deemed complete.

Prior to application submittal, applicants must hold at least one meeting for community members and one local agency meeting with relevant agencies.



Owned and developed by





# Article VIII



## Visual resources

- The Application will include a Visual Impact Assessment (VIA) to evaluate potential visibility and visual impacts of the project within a two-mile radius study area.
- To determine visual impacts, photographic simulations from representative viewpoints will be developed and evaluated for visual contrast with the existing landscape.
- The Applicant will solicit input from State and Town representatives on candidate viewpoints for simulation development and visually sensitive resources.
- Methodology and results of the visual analysis will be included as part of a formal VIA report.

## Noise analysis

- A Noise Impact Assessment (NIA) will be prepared to compare proposed sound conditions to existing conditions at the Facility Site and surrounding properties.
- Modeling will be based on existing sound levels from data collected at the Facility Site.

Owned and developed by





# Local agency account funding

Article VIII requires that the Applicant submit a fee to be deposited in a local agency account in an amount equal to \$1,000 for each MW of capacity for a total of \$150,000. Any local agency or intervenor may request funding from this account.

These funds can be requested to complete the project record, and for local agencies this includes using the funds to determine if the proposed facility complies with local laws and requirements.

Any local agency or potential community intervenor can submit a request for initial funding within thirty (30) days of the date of application filing and that such request may be made by mail to the:

Office of Renewable Energy Siting  
Attention: Local Agency Account  
Funding Request, c/o OGS Mailroom  
Empire State Plaza, 240 State Street  
P-1 South, J Dock  
Albany, NY 12242

or by email to [hearings@ores.ny.gov](mailto:hearings@ores.ny.gov)  
Subject line "Local Agency Account  
Funding Request.

At least seventy-five (75) percent of the local agency account funds for each project are reserved for potential awards to local agencies (host municipalities).



Owned and developed by





# Co-Utilization

Development of the Limestone Solar Co-Use Plan is underway. AES will continue to develop thoughtful methods of land preservation and utilization in conjunction with project development.

We are committed to strengthening our partnerships and being a good neighbor. If you have questions, please reach out to the AES NY team!

Reach our NY Stakeholder Relations team:

[866-757-7697](tel:866-757-7697) (toll-free)

[limestonesolar@aes.com](mailto:limestonesolar@aes.com)

[www.aes.com/project/limestone-solar](http://www.aes.com/project/limestone-solar)

At AES, we understand the importance of land and are actively working to create synergies between renewable energy development and land use.

We continue to partner with researchers, farmers, and local stakeholders to assess site specific needs and the most feasible plan forward utilizing co-use, dual-use or agrivoltaic system practices.



- Currently, sheep graze more than 35 sites, totaling over 6500 acres across our portfolio.
- Working across our portfolio to collect data and perform research on co-utilization best practices.
- Through strategic partnerships AES continues to implement methods such as pollinator habitats, crop growth and sheep grazing.



Owned and developed by

