

# AES Clean Energy

Founded in 1981 and headquartered in Arlington, VA, AES is a Fortune 500 global energy company accelerating the future of energy. AES is the **only** US-based global power company in the world.

In the US, AES **Clean Energy** operates over 400 wind, solar and battery storage projects across 21 states!

Our values:



Safety  
first



Highest  
standards



All  
together

Our clean energy footprint:

**4.5 GW**

Operating portfolio of clean energy projects across the US (solar, solar+storage, wind, wind+storage)

**40+ GW**

Portfolio of clean energy projects in development across the US

**851 MW**

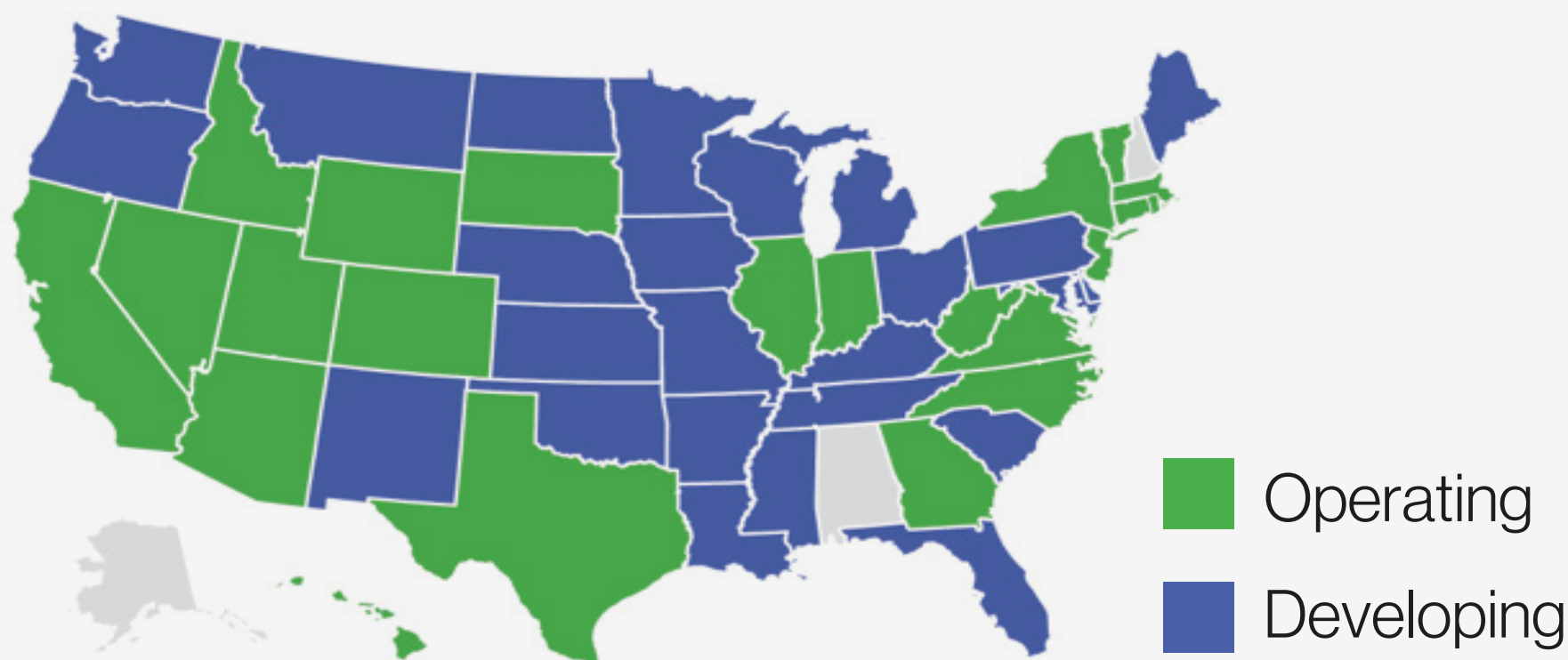
Operating portfolio in New York (solar, solar+storage, wind)

**2+ GW**

Development portfolio in New York (wind, solar, battery storage)

\* 1 GW = 1,000 MW

In New York, AES is **energized** by a workforce of approximately **80 people**, with over **700 employees** working for AES Clean Energy across the country.



Accelerating the future of energy, **together**.





# Wethersfield Repower Overview

AES plans to repower the existing Wethersfield wind park located in the Towns of Wethersfield and Eagle in Wyoming County.

Repowering the project will entail removal and recycling of the existing blades on each wind turbine and replacing them with longer and more efficient blades. Drivetrains and hubs will also be replaced, generators will be refurbished, and foundations will be retrofitted.

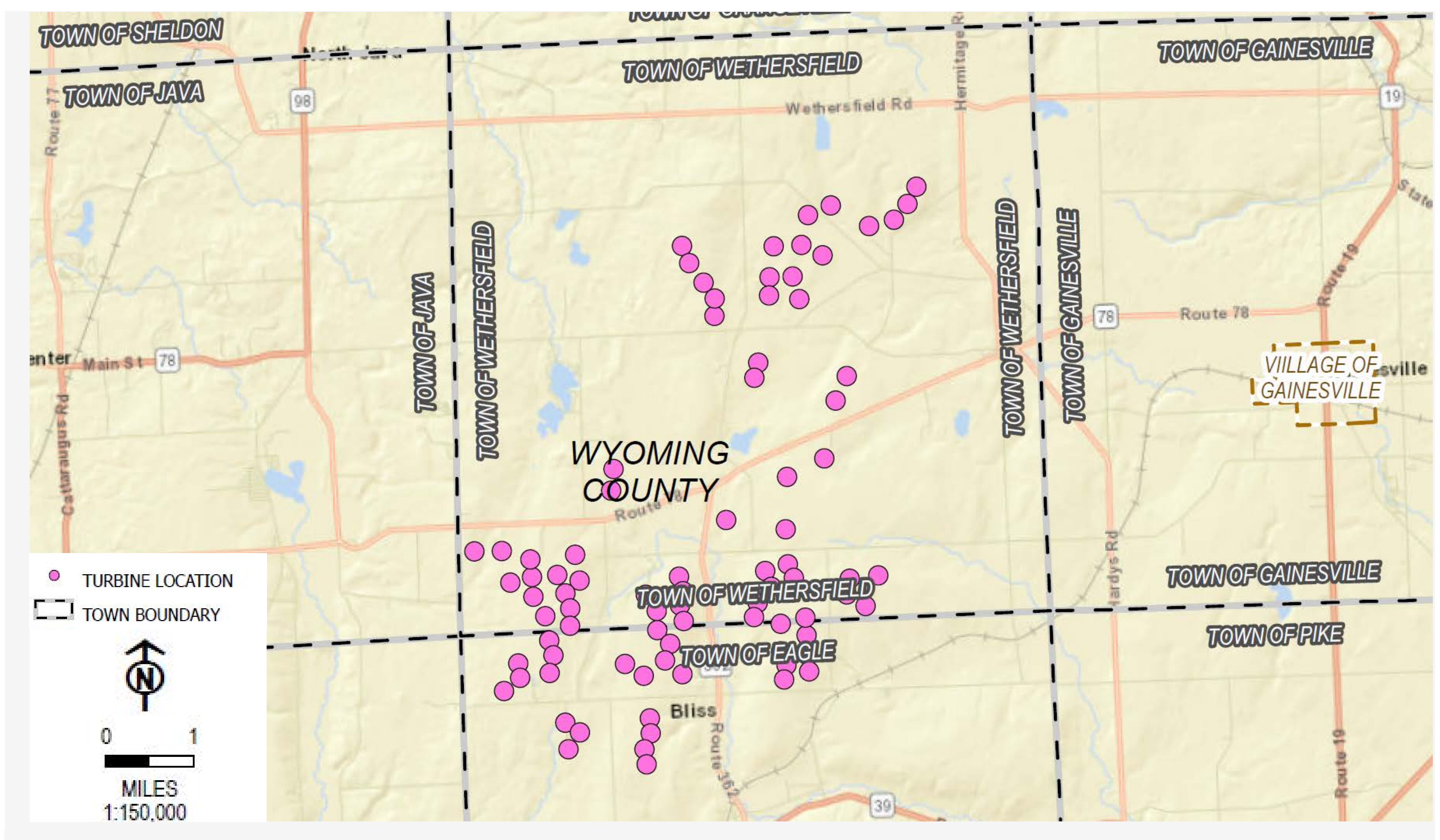
The project layout will not change; existing wind turbine towers and foundations will remain in their current place, and no new turbines will be built anywhere on site.

## Current Project

- Began operations in 2009
- 126 MW nameplate capacity
- [84] 1.5 MW turbines at 80-meter hub height (the top of the tower), with a 77-meter rotor diameter
- 126-foot blade length; 389-foot maximum tip height

## Repowered Project

- [84] 1.62 MW turbines at 80-meter hub height with a mix of 97-meter and 91-meter rotor diameters
- Blade length increase of approximately 33 feet, increasing maximum tip height up to 422 feet
- Results in a 25%+ increase in energy production and extends the project life up to 30 years



Wethersfield Wind project layout



# Bliss Repower Overview

AES plans to repower the existing Bliss wind park located in the Town of Eagle in Wyoming County.

Repowering the project will entail removal and recycling of the existing blades on each wind turbine and replacing them with longer and more efficient blades. Drivetrains and hubs will also be replaced, generators will be refurbished, and foundations will be retrofitted.

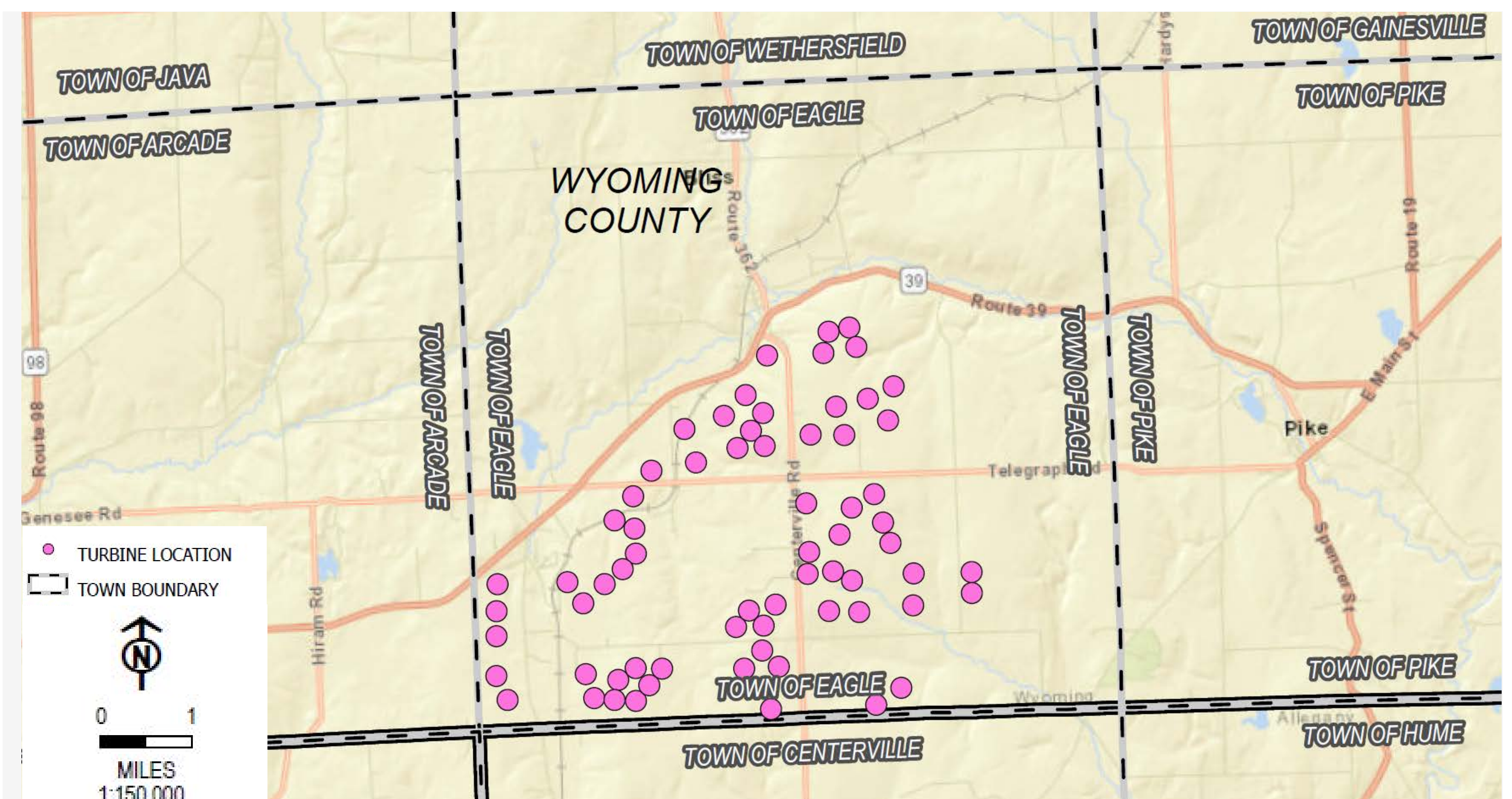
The project layout will not change; existing wind turbine towers and foundations will remain in their current place, and no new turbines will be built anywhere on site.

## Current Project

- Began operations in 2008
- 100.5 MW nameplate capacity
- [67] 1.5 MW turbines at 80-meter hub height (the top of the tower), with a 77-meter rotor diameter
- 126-foot blade length; 389-foot maximum tip height

## Repowered Project

- [67] 1.62 MW turbines at 80-meter hub height with a mix of 97-meter and 91-meter rotor diameters
- Blade length increase of approximately 33 feet, increasing maximum tip height up to 422 feet
- Results in a 25%+ increase in energy production and extends the project life up to 30 years



Bliss Wind project layout



# Repower Process

## Phase 1

### Site improvements

Site conditions will be upgraded to prepare for new blade delivery and crane work. This work will include:

- Minor tree clearing and grubbing (removal of stumps, shrubs & roots) along roads and around turbines
- Grading and smoothing of humps and dips in roads
- Foundation improvements up to a 50-foot radius from the center of the turbine

## Phase 2

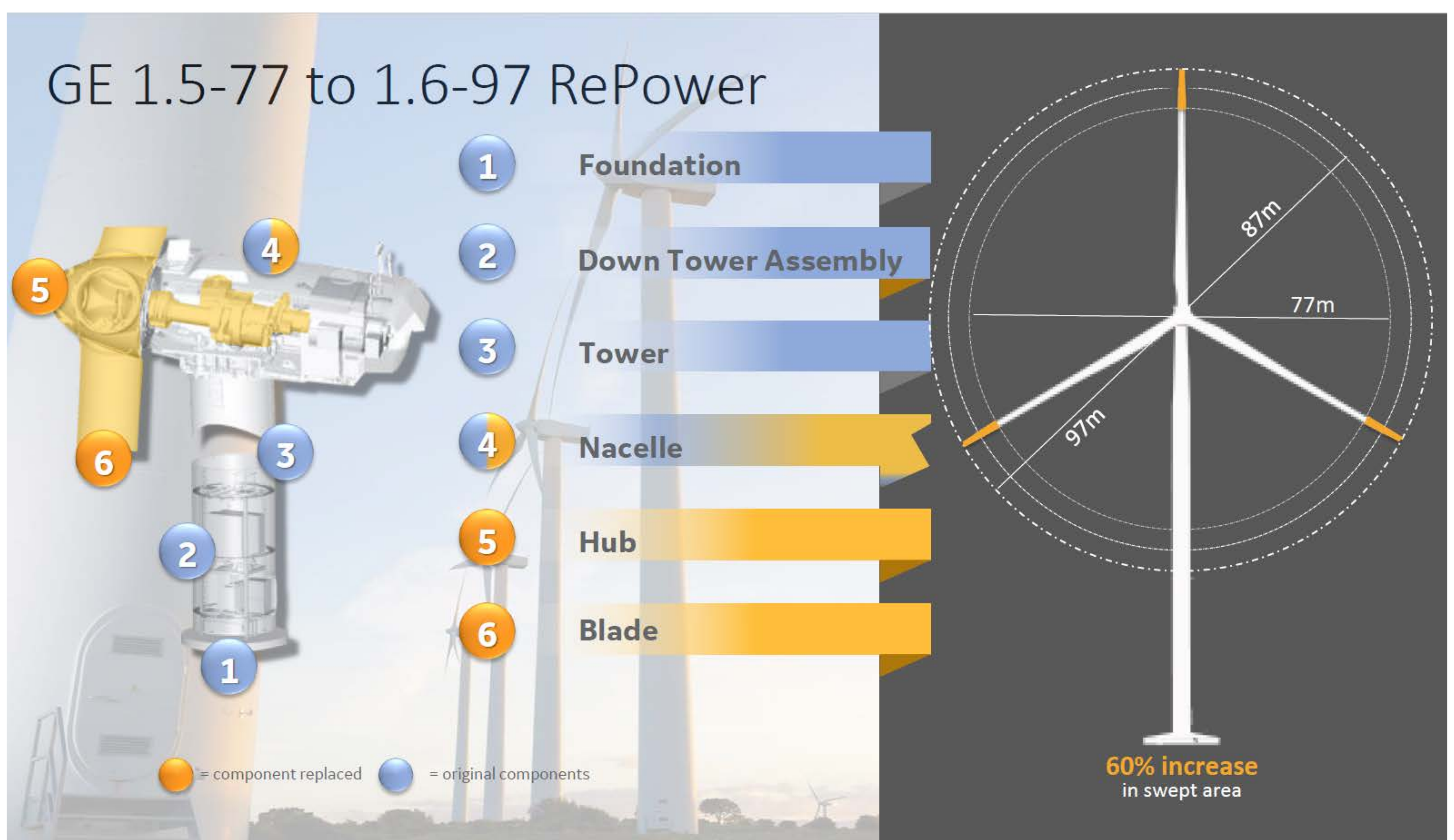
### Deliveries

- A laydown yard will be used to store equipment

## Phase 3

### Installation

- Crane work will happen on a per-turbine basis, with up to three being repowered at one time



\* Visual is not to scale



# Repower Photos



New Rotor Installation



New Drivetrain Installation





# Local Benefits

## Benefits

- Economic Investment: In the 14 years Bliss & Wethersfield Wind have been operating, over \$43 million has been added to the local economy through tax revenue and landowner payments
- Jobs: The Bliss and Wethersfield wind parks employ 11 full-time wind technicians and leads
- During the repowering process, there will be 100-150 construction jobs created



[www.aes.com/bliss-wind](http://www.aes.com/bliss-wind)  
[www.aes.com/wethersfield-wind](http://www.aes.com/wethersfield-wind)



## Community involvement

The Western NY Valcour team has invested in the local community via donations to the Eagle Free Library, Charlotte House, the Bliss Fire Department, Animal Friends of Wyoming County, and more.

Please reach out to us with your ideas, suggestions, questions or comments on how we can be a better neighbor and partner to the Bliss & Wethersfield communities!

We are committed to making positive local impacts that improve people's lives, especially in the areas of economic development, the environment, community health and resilience, and workforce development.

## We want to hear from you!

Reach our NY Stakeholder Relations team at:

- 866-757-7697
- [blisswind@aes.com](mailto:blisswind@aes.com); [wethersfieldwind@aes.com](mailto:wethersfieldwind@aes.com)
- 292 Madison Ave, 15th Floor, New York, NY 10017

Or contact our local Valcour office at:

- 585-322-7671
- 3700 Route 78, Bliss, NY 14024



# Estimated Repowering Timeline

2022

## Development Phase:

- Project analysis & planning
- Studies & engineering
- Permitting

2023

## Implementation Phase:

- Site improvements
- Component delivery
- Installation (replacement of turbine blades, hubs and drivetrains)
- Resumption of operations

2024

2025