

AES

Update for Wyoming County, New York



Brett Hastings
Josh Baird
Jay Atwater
Neely Kelley
November 30, 2022



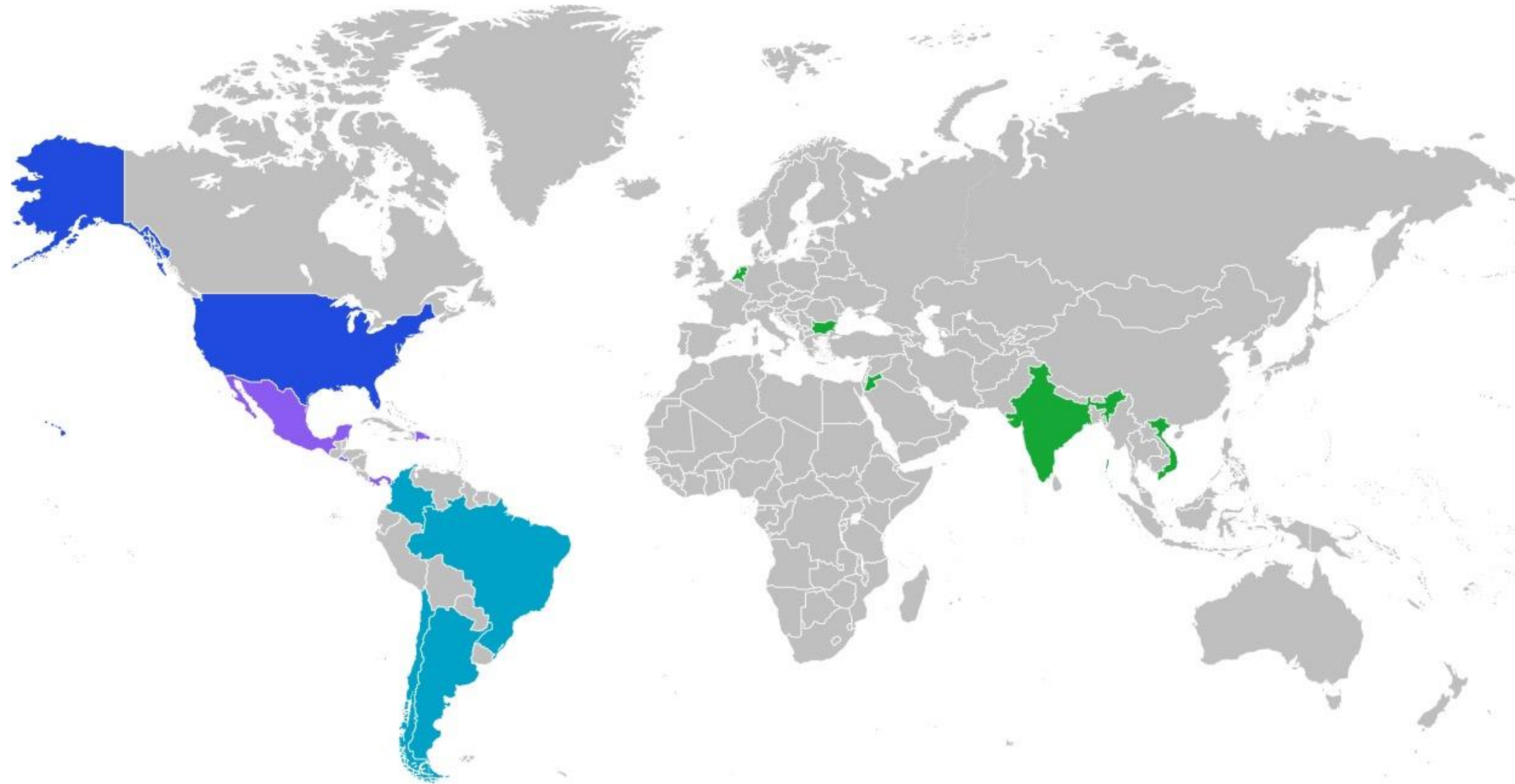
Agenda

- Overview of AES
- Stakeholder Relations and the AES Social Impact Program
- Operations update
- Repower plans for Bliss and Wethersfield Wind Parks
- Q&A

Who is AES



AES - in the world

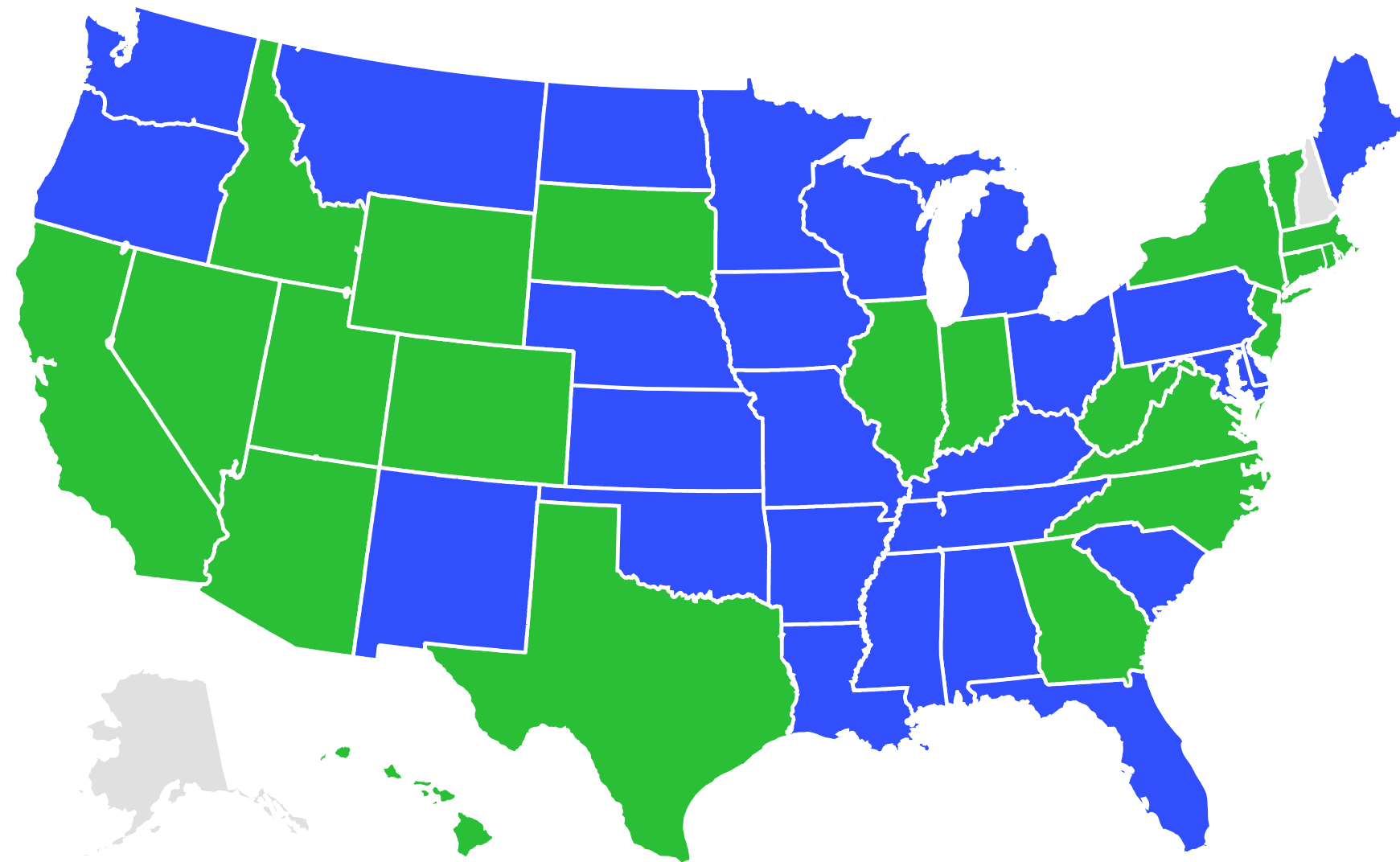


- **4** Continents
- **14** Countries
- **6** Utilities
- **2.5** Million Customers Served
- **8450** Global Workforce

World Decarbonization Target

- Current operating renewable assets in the world – **700 GW's**
- Necessary to completely de-carbonize the world – **3000 GW's**

AES Clean Energy – In the US



→ **5 GW** Operating Portfolio

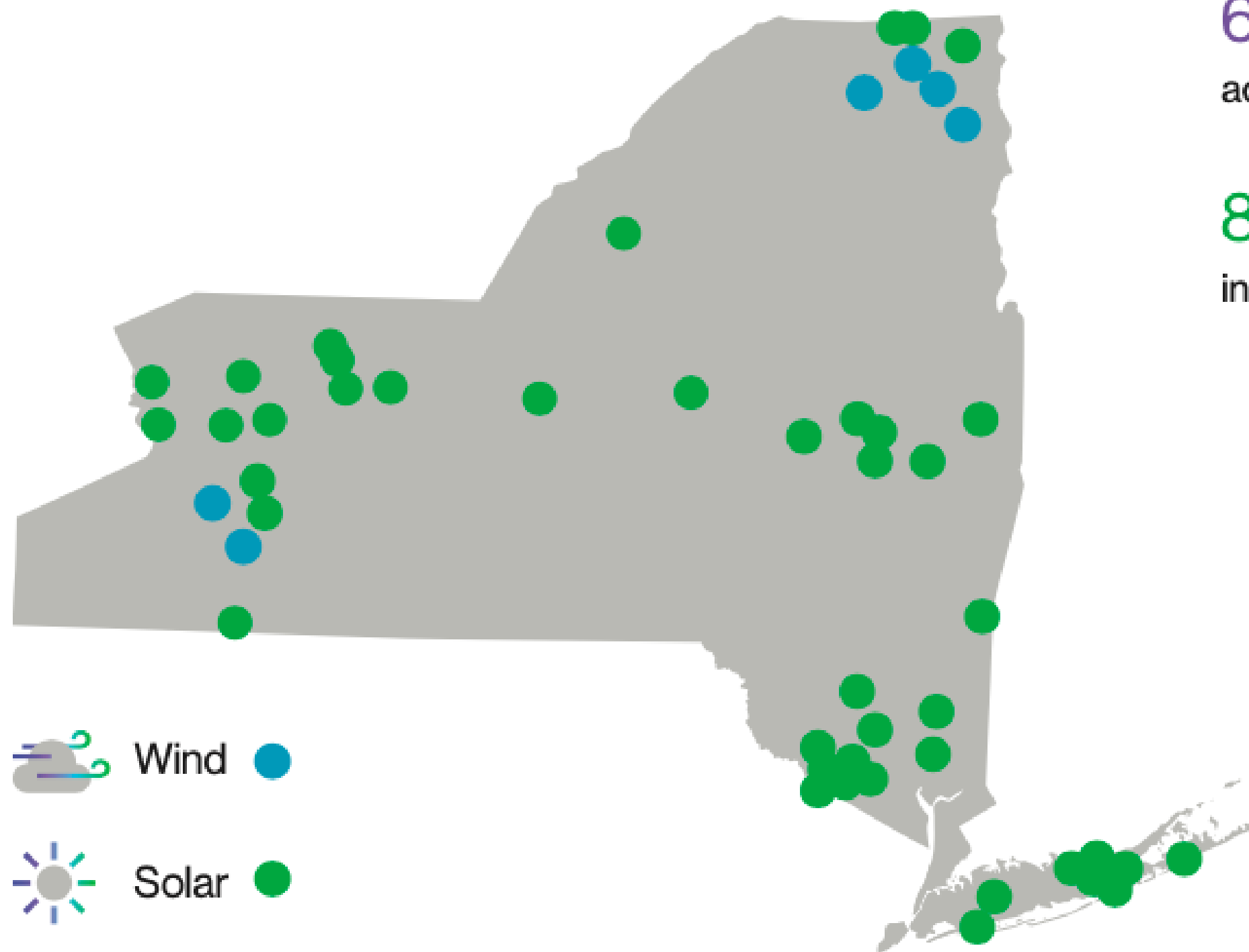
→ **4 GW** Development Pipeline

→ **3846 MW** Signed Power Purchase
Agreements '21/22

→ **1036** Clean Energy Workforce

AES Clean Energy – In NY

Operating projects in New York



60 projects
across the state

851 MW
in operation

Future Work in the State

2+ GW
in development of
utility-scale solar

50 MW
in development of
community solar projects

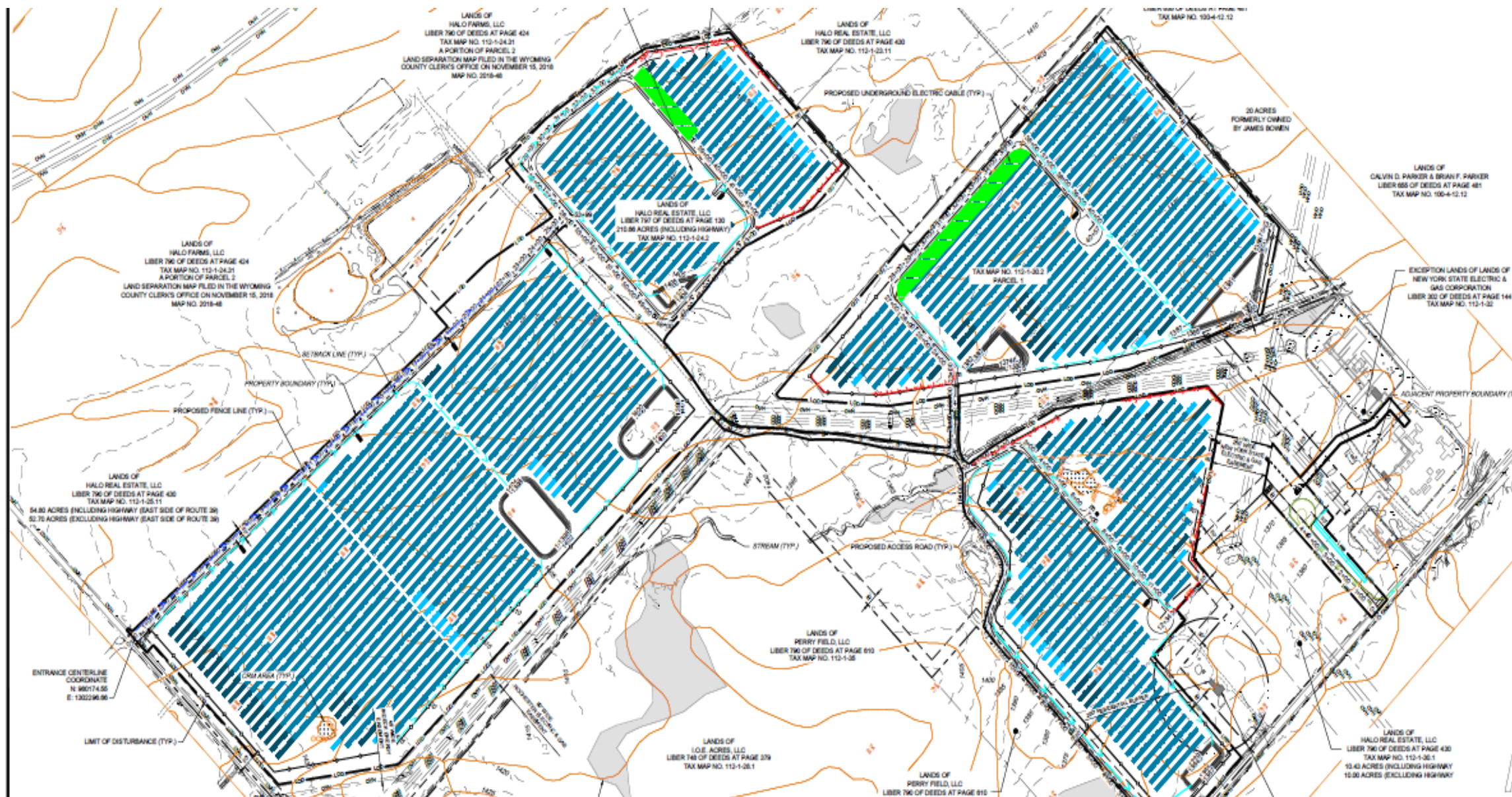
400 MW
planned storage capacity as hybrid
solar-plus-storage in development

AES Clean Energy – In Wyoming County

Work in the County **Silver Lake Solar**

Next Steps:

- Interconnection agreement
 - End of Class Year commitment
- Verify EPC pricing vs. NYSERDA contracted rate
 - Labor/Supply chain issues
 - Availability of EPC's
- Pilot agreement completion



AES Stakeholder Relations



The Stakeholder Relations Team:

What we do

Accessibility

- To our stakeholders
- Managing Websites
- Project emails
- Phone line
- Virtual Office hours

Outreach

- Community meetings
- Public Hearings
- Tours
- Event Sponsorships
- Memberships
- Communications
 - Materials
 - Local press

Social Impact

- Partnering with communities and organizations for high impact initiatives
- Goals Align with United Nations Sustainable Development Goals
- American Clean Power's Energy Transition for All Pledge

Partnering to strengthen positive impact through socioeconomic and environmental partnerships that improve lives today and in the future.

Focus Pillars



Partnering for **access** to safe, efficient, and affordable energy and basic services



Partnering for **Inclusive** economic growth & education



Partnering for the **Environment**



Partnering for Community **Resilience**

Social Impact In New York

By Pillar

Partnering for **access** to safe, efficient, and affordable energy and basic services

- Lyme Library
- Brownville Glen Park Library
- Croghan Free Library
- Croghan Fire District
- Castorland Fire District
- Brownville Joint Fire District
- Barre Betterment Committee
- Chances and Changes

Partnering for **Inclusive** economic growth & education

- Barker Central School District
- Chateaugay Central School District
- IBEW Local 910
- FEH BOCES
- Genesee Community college
- Discovery Education STEM Career Coalition

Partnering for the **Environment**

- Autism Nature Trail
- All-Electric ATV – in process

Partnering for Community **Resilience**

- Community Schoolyards - Trust for Public Land

FEH BOCES Social Impact Partnership

- Meeting to learn about their program
- Share AES' goals and priorities
- Identify a mutually beneficial project
- Compliance Approval



NY Permitting 94-c and SEQRA



Overview of 94-c and Municipalities

- ORES must make finding that the project complies with applicable substantive local laws and regulations.
- Similar to Article 10, ORES can elect not to apply a local law that is unreasonably burdensome in view of CLCPA targets and environmental benefits of the project.
- Requires municipalities to submit a statement of compliance with local laws at least 60 days after issuance of the draft permit.
- Local community intervenors and host towns are able to seek intervenor funds (\$1,000/MW).
- 75% of funds reserved for municipalities.
- Must apply for funds within 30 days of application filing.
- Requires host community benefit.

94-c Siting Application Exhibits

1. General Requirements
2. Overview and Public Involvement
3. Location of Facilities and Surrounding Land Use
4. Real Property
5. Design Drawings
6. Public Health, Safety and Security
7. Noise and Vibration
8. Visual Impacts
9. Cultural Resources
10. Geology, Seismology and Soils
11. Terrestrial Ecology
12. NYS Threatened or Endangered Species
13. Water Resources and Aquatic Ecology
14. Wetlands
15. Agricultural Resources
16. Effect on Transportation
17. Consistency with Energy Planning Objectives
18. Socioeconomic Effects
19. Environmental Justice
20. Effect on Communications
21. Electric System Effects and Interconnection
22. Electric and Magnetic Fields
23. Site Restoration and Decommissioning
24. Local Laws and Ordinances
25. Other Permits and Approvals

Repower Plans: Bliss and Wethersfield Wind parks



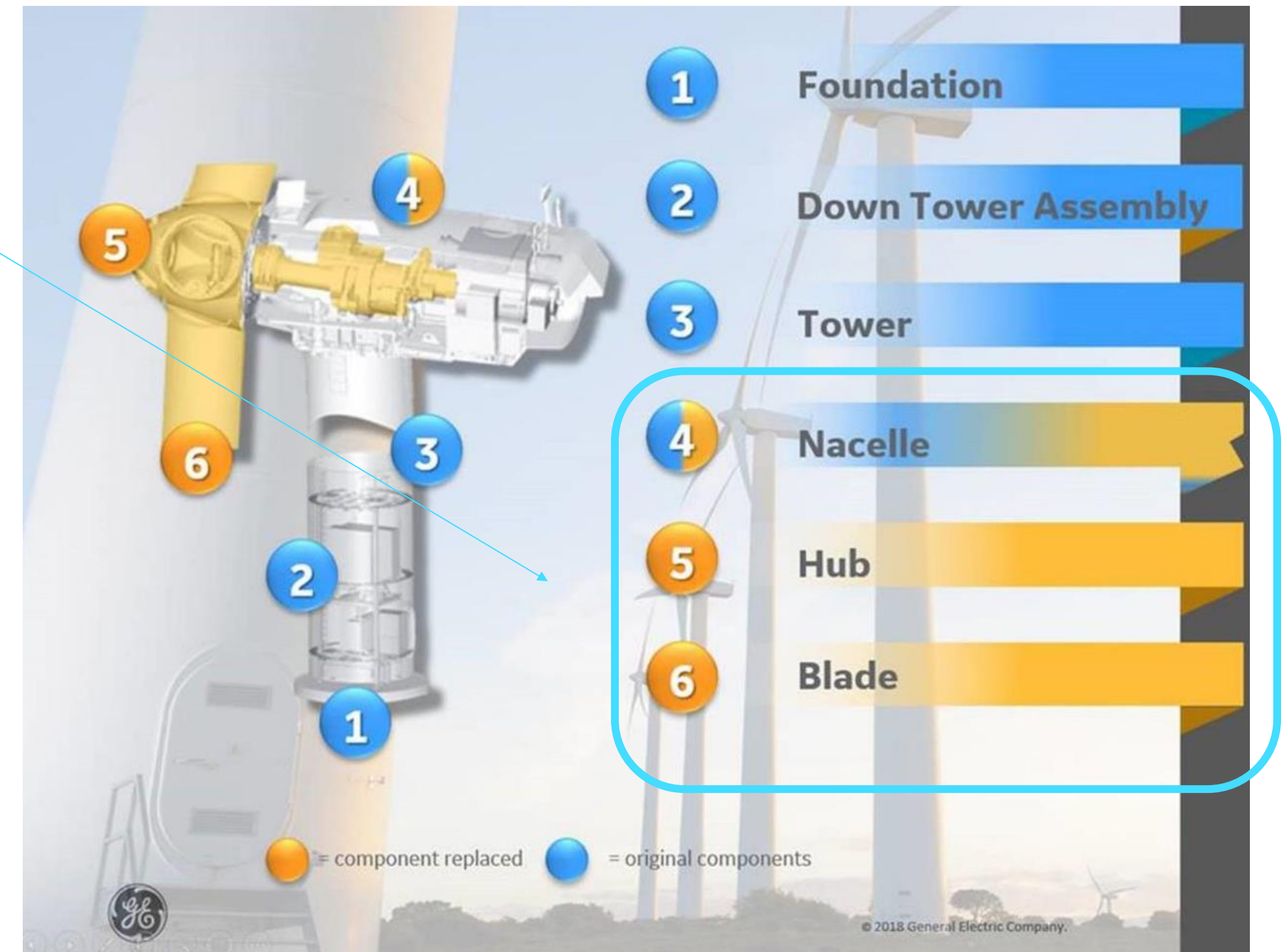
Partial Repowering Overview

Replace blades, drivetrains, and hubs (4, 5 & 6)

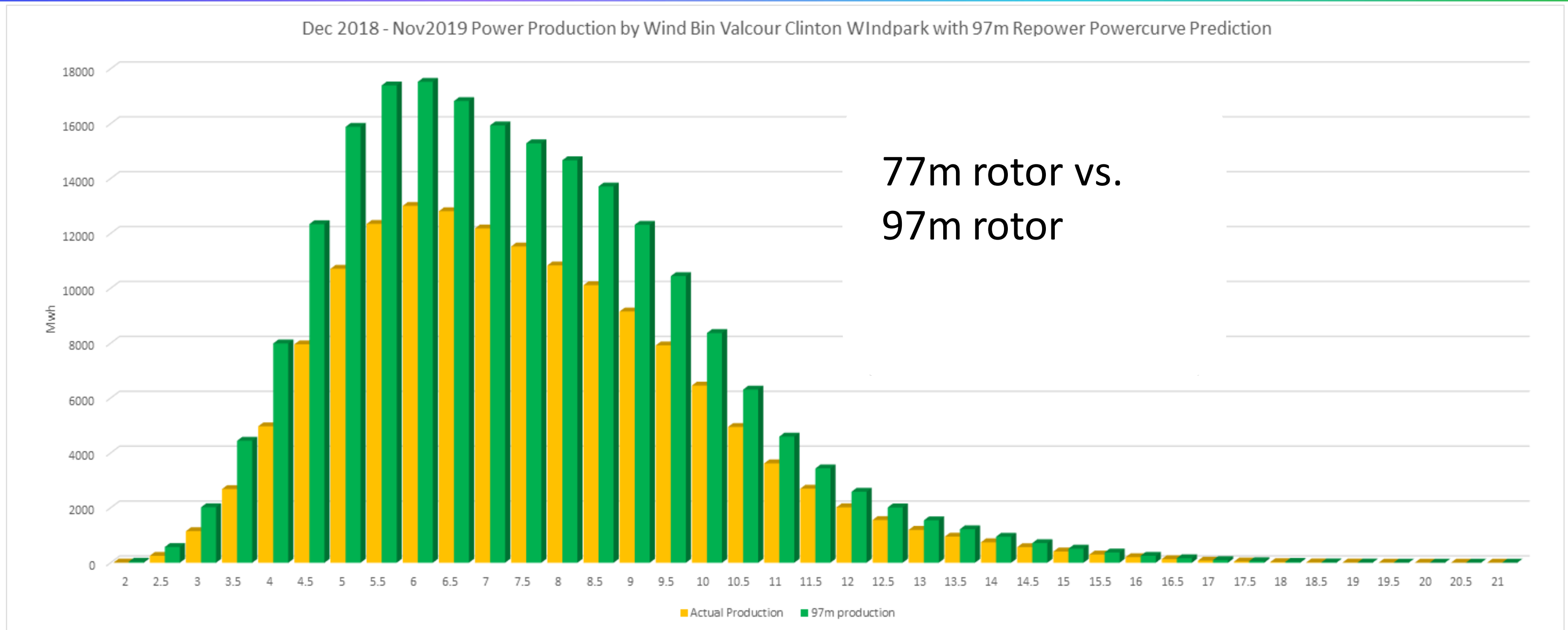
- Keep existing towers and foundations
- Foundations will require retrofits
- No new turbines or change to layout expected
- Utilize existing roads
- Utilize existing underground electrical infrastructure

Increase in Rotor Diameter (measurements approx.)

- Current model is a 77-meter RD
- Repower model is a 97-meter RD
- 20+% increase in energy production
- Extend project life

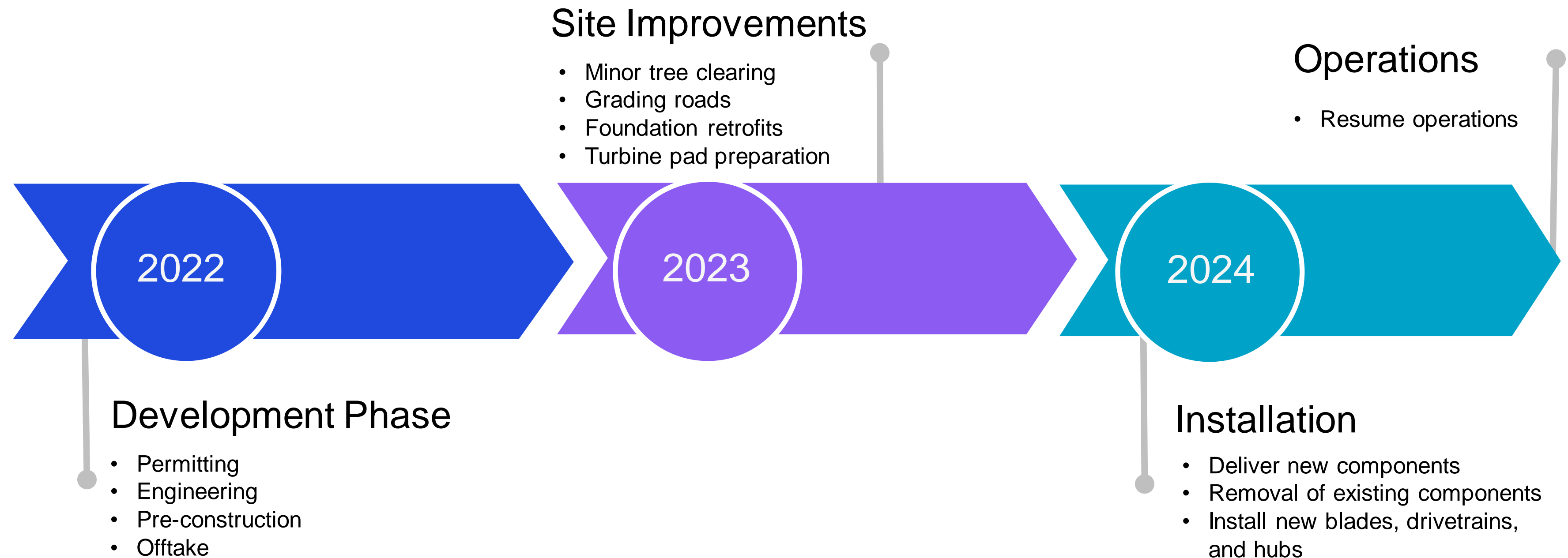


Energy Production



Estimated repower timeline

Repowering is contingent on NYSERDA award, which is still to be determined



Operations Update: Bliss and Wethersfield Wind parks



Thank You

