

Legend

- - - Resource Inventory Area (5 miles)
- Stream/River
- Hartland Swamp WMA



1:15,600

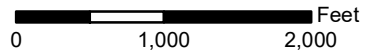


Figure 2

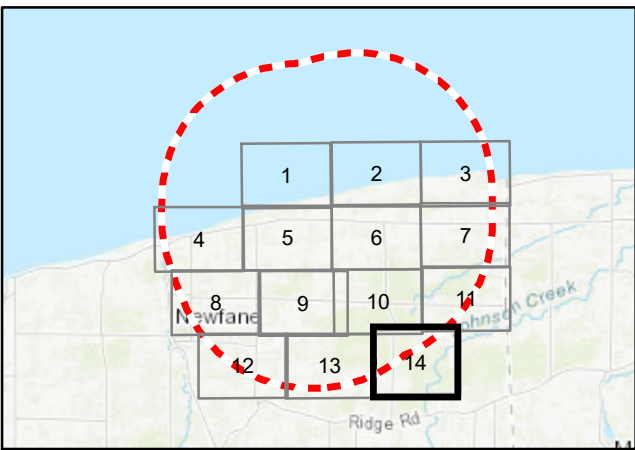
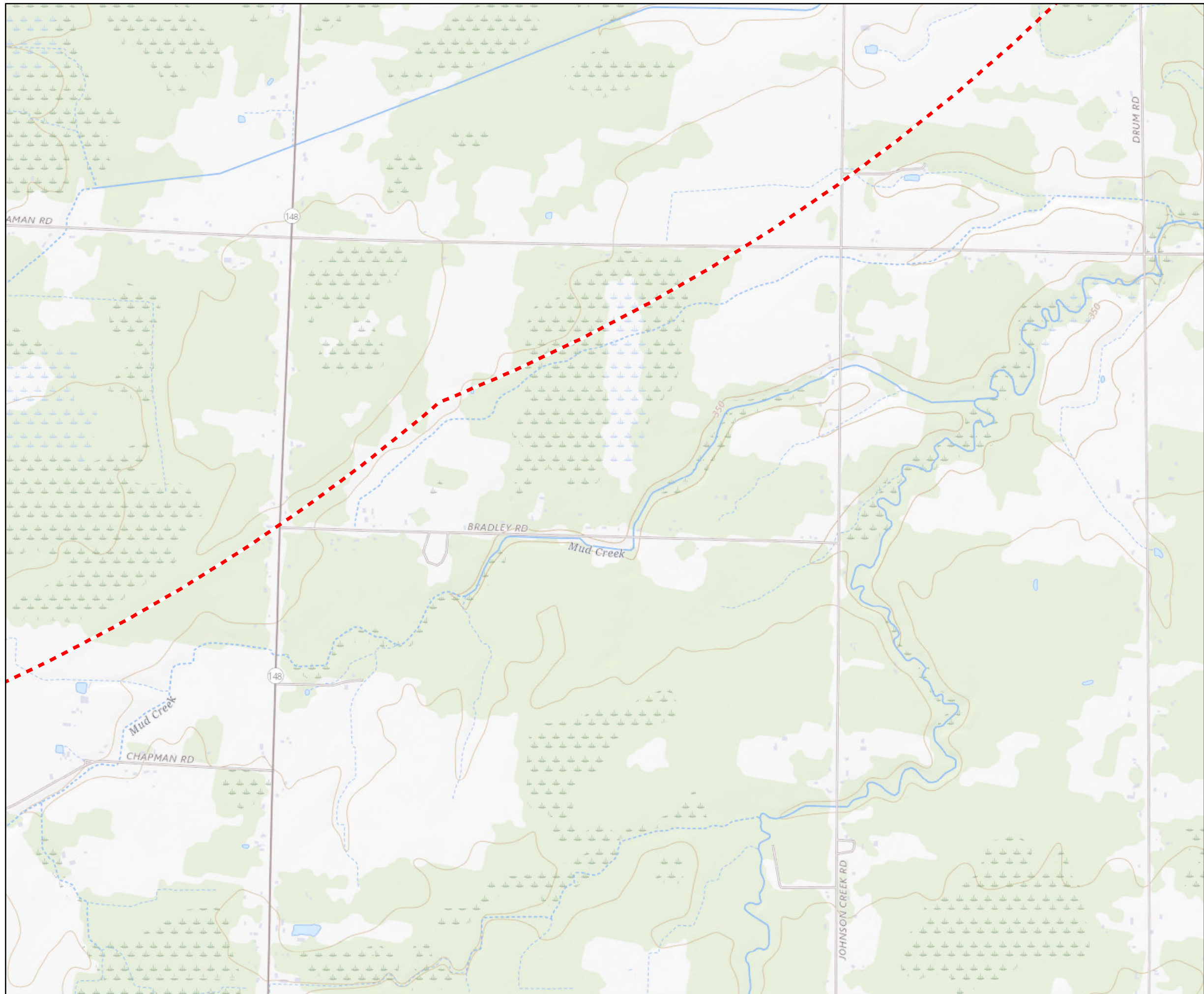
Visual Resource Inventory
 Map 13 of 14
 Somerset Solar
 Niagara County, NY
 August 2023



TETRA TECH



Source: Esri, et. al., 2022; USDA NAIP, BTS, US CENSUS, NYSGIS, USGS PAD-US 2.1, NSD, NYSDEC, HIFLD, NHD, GOOGLE EARTH PRO, NRHP, NSBP



Legend

--- Resource Inventory Area (5 miles)



1:15,600

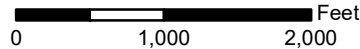


Figure 2

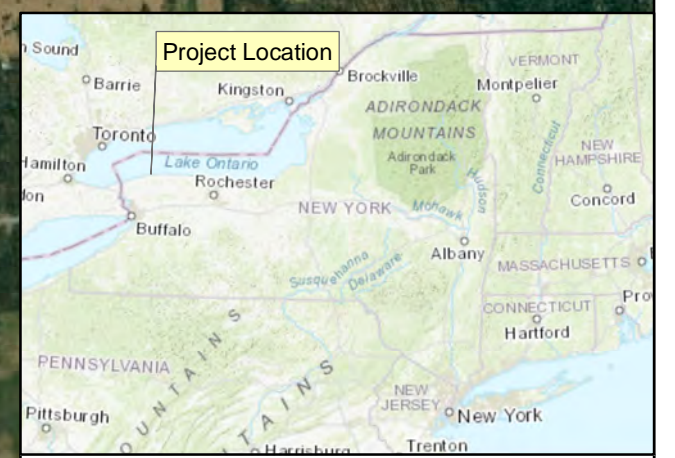
Visual Resource Inventory

Map 14 of 14

Somerset Solar
Niagara County, NY
August 2023



Source: Esri, et. al., 2022; USDA NAIP, BTS, US CENSUS, NYSGIS, USGS PAD-US 2.1, NSD, NYSDEC, HIFLD, NHD, GOOGLE EARTH PRO, NRHP, NSBP



- Legend**
- Field Inventory Point
 - Line of Sight
 - Representative Viewpoint with Photo Simulation
 - ▭ Project Site
 - ▭ Foreground Distance Zone (0.5 miles)
 - ▭ Visual Study Area (2 miles)
 - ▭ Potential Visibility of Solar Array*
 - ▲ Point of Intersection
 - Overhead Electric Line
 - Underground Electric Line
 - Aboveground Electric Line (Cabling on Steepers)
 - Facility Substation
 - Photovoltaic Solar Array

*Viewshed analysis based on USGS NED10m. Solar array obtained from Tetra Tech Engineering on 08/03/2023. An array height of 11 ft and an observer height of 6 ft were assumed in the analysis. Areas that are not shaded in green indicate that the proposed solar facility is likely not visible at that location.

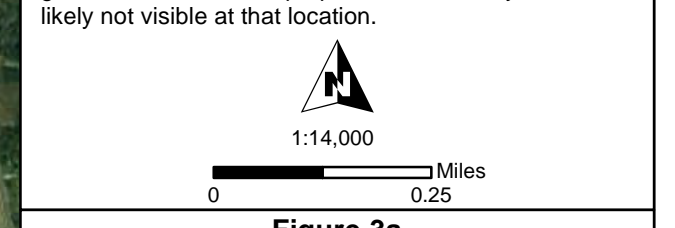
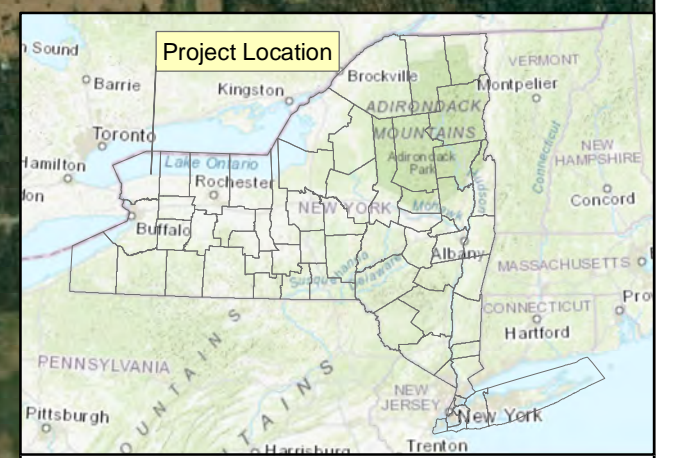
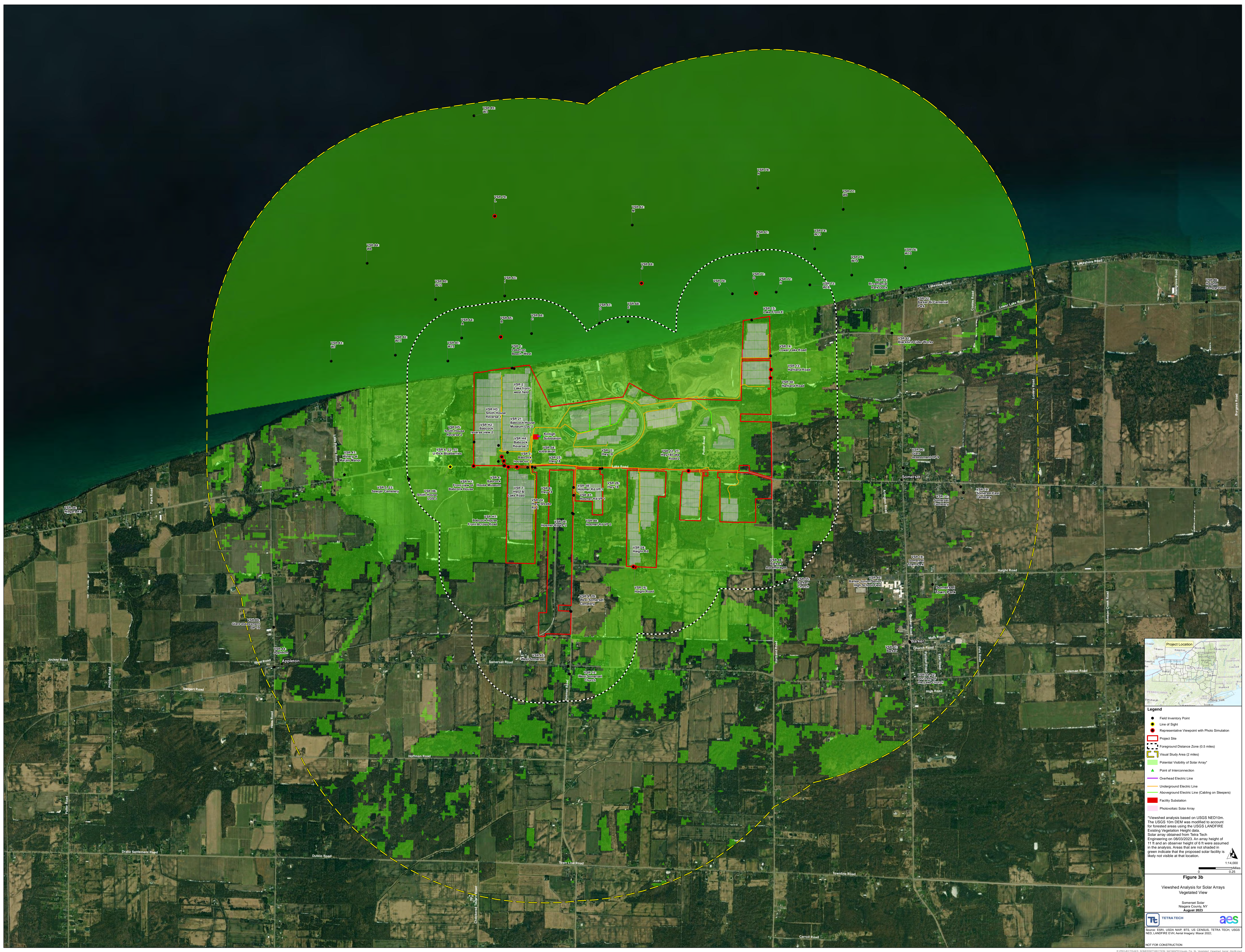


Figure 3a
Viewshed Analysis for Solar Arrays
Topographic View

Somerset Solar
Niagara County, NY
August 2023

Tetra Tech aes
Source: ESRI, USDA NAD, BLS, US Census, Tetra Tech, Tetra Tech, USGS NED, LANDFIRE E-1H, Aerial Imagery, Maxar 2022.

NOT FOR CONSTRUCTION



- Legend**
- Field Inventory Point
 - Line of Sight
 - Representative Viewpoint with Photo Simulation
 - ▭ Project Site
 - ▭ Foreground Distance Zone (0.5 miles)
 - ▭ Visual Study Area (2 miles)
 - ▭ Potential Visibility of Solar Array*
 - ▲ Point of Interconnection
 - Overhead Electric Line
 - Underground Electric Line
 - Aboveground Electric Line (Cabling on Sleepers)
 - Facility Substation
 - Photovoltaic Solar Array

*Viewshed analysis based on USGS NED 10m. The USGS 10m DEM was modified to account for forested areas using the USGS LANDFIRE Existing Vegetation Height data. Solar array obtained from Tetra Tech Engineering on 08/03/2023. An array height of 11.1 ft and an observer height of 6 ft were assumed in the analysis. Areas that are not shaded in green indicate that the proposed solar facility is likely not visible at that location.

Figure 3b
Viewshed Analysis for Solar Arrays
Vegetated View

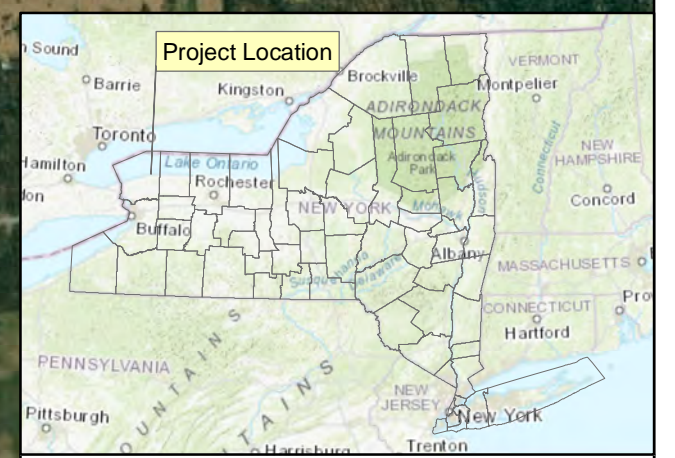
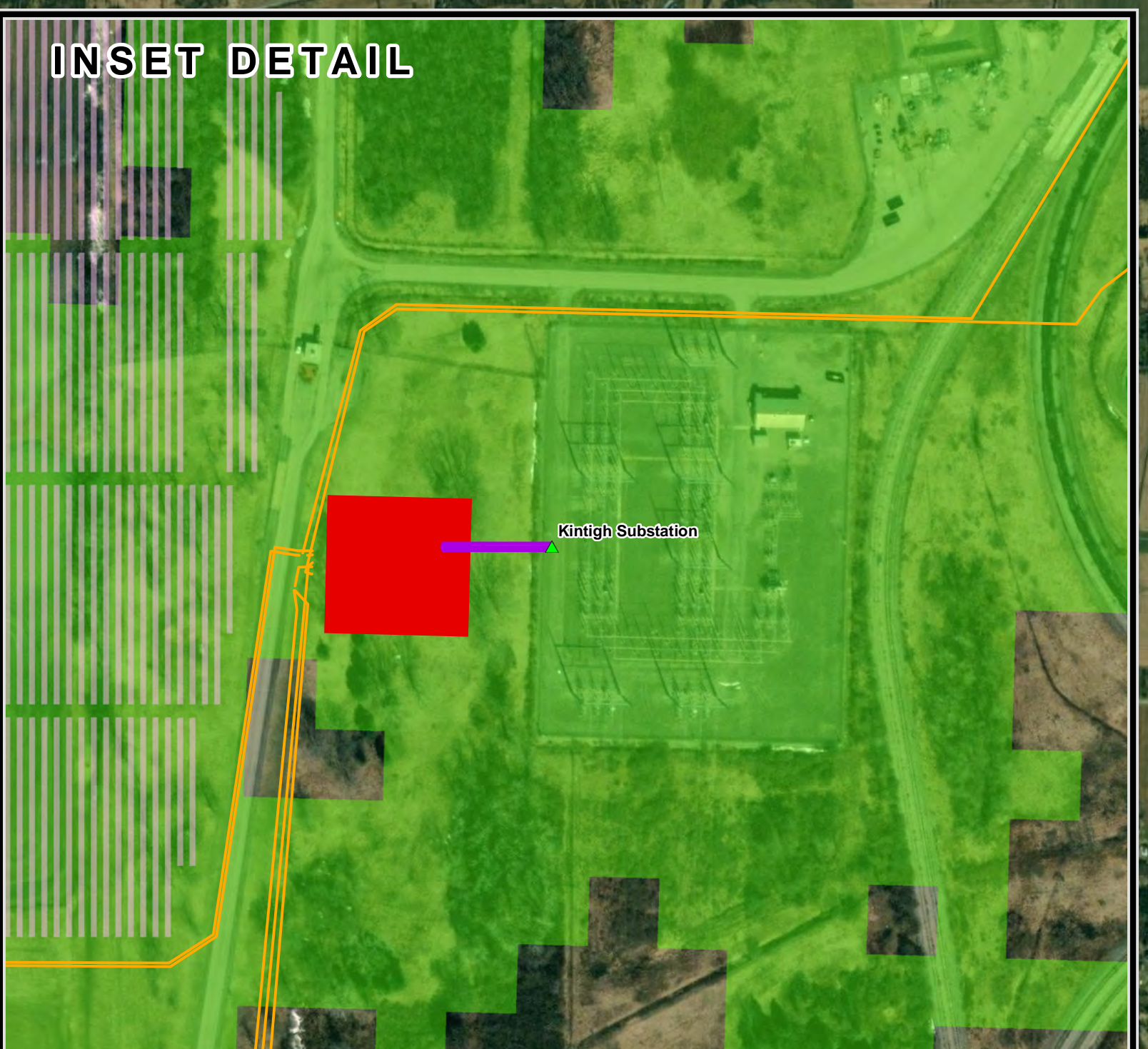
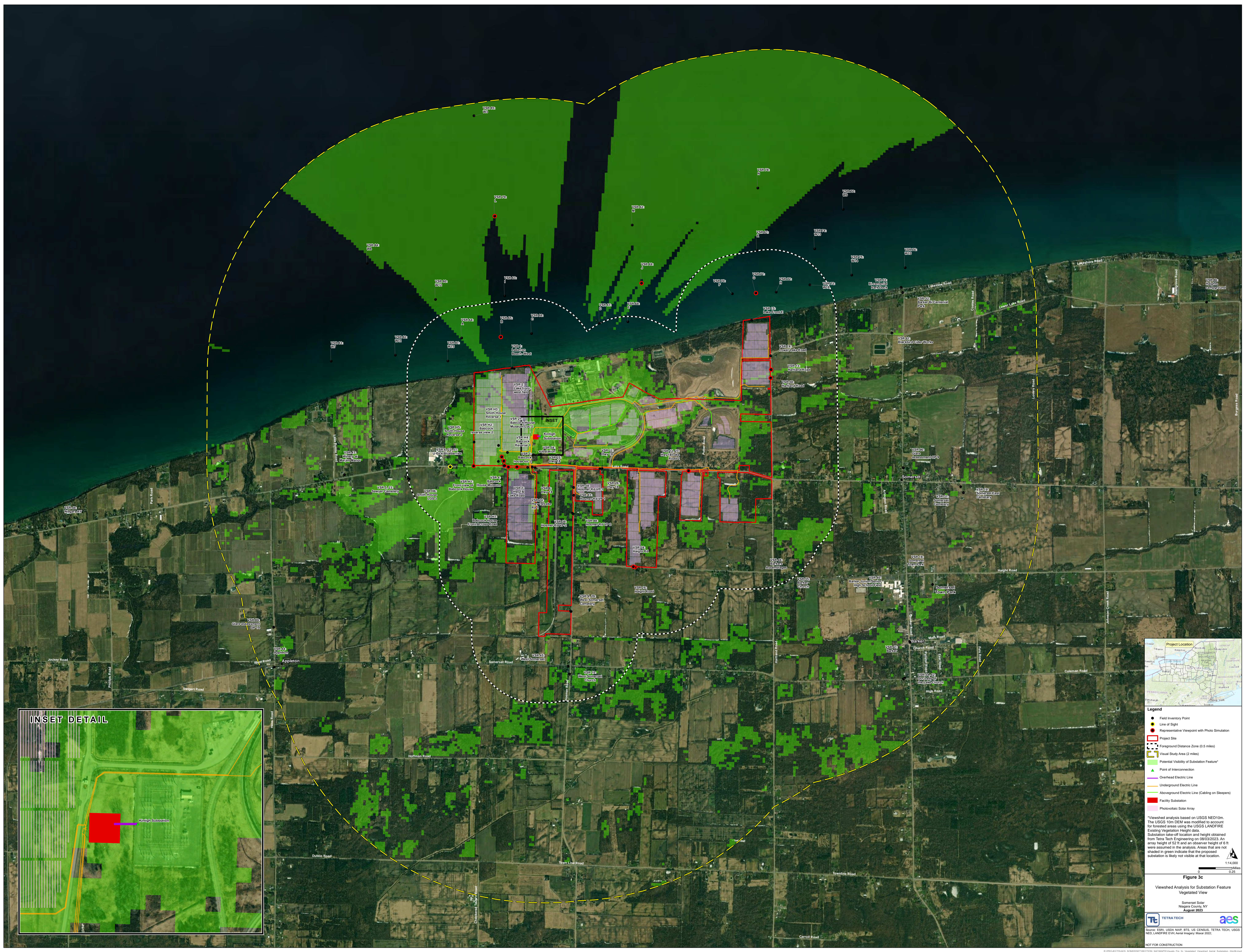
Somerset Solar
Somerset County, NY
August 2023

1:14,000
0 0.25 Miles

TETRA TECH aes

Source: ESRI, USDA NAD, BLS, US CENSUS, TETRA TECH, TETRA TECH, USGS NED, LANDFIRE E1H, Aerial Imagery, Mapbox 2022.

NOT FOR CONSTRUCTION



Legend

- Field Inventory Point
- Line of Sight
- Representative Viewpoint with Photo Simulation
- Project Site
- Foreground Distance Zone (0.5 miles)
- Visual Study Area (2 miles)
- Potential Visibility of Substation Feature*
- Point of Interconnection
- Overhead Electric Line
- Underground Electric Line
- Aboveground Electric Line (Cabling on Sleepers)
- Facility Substation
- Photovoltaic Solar Array

*Viewshed analysis based on USGS NED 10m. The USGS 10m DEM was modified to account for forested areas using the USGS LANDFIRE Existing Vegetation Height data. Substation take-off location and height obtained from Tetra Tech Engineering on 08/03/2023. An array height of 52 ft and an observer height of 6 ft were assumed in the analysis. Areas that are not shaded in green indicate that the proposed substation is likely not visible at that location.

1:14,000
0 0.25 Miles

Figure 3c
Viewshed Analysis for Substation Feature Vegetated View

Somerset Solar
Niagara County, NY
August 2023

Tetra Tech aes

Source: ESRI, USDA NAD, BLS, US CENSUS, TETRA TECH, USGS NED, LANDFIRE E1H, Aerial Imagery, Maxar 2022.

NOT FOR CONSTRUCTION